

---

**INSTALLATION  
AND  
USER GUIDE**

**Fast Track<sup>®</sup>  
PC SOFTWARE**

**VERSION 2.21**

**R 06/08**

---

**PHASE RESEARCH**

3500 W. Moore Avenue, Suite M  
Santa Ana, California 92704-6818  
P: 714-850-1320 F: 714-850-1502

[fasttrack@phaseresearch.com](mailto:fasttrack@phaseresearch.com)

[www.fasttracktimer.com](http://www.fasttracktimer.com)

# Fast Track<sup>®</sup> PC SOFTWARE

---

## License and Warranty

The software, which, accompanies this license (the "Software") is the property of Phase Research or its licensors and is protected by copyright law. While Phase Research continues to own the Software, you will have certain rights to the use of this Software after your acceptance of the license.

1. You May:
  - i. Install the software on multiple computers
  - ii. Install and use the Software for connecting to Fast Track 2+2<sup>®</sup> Timers at multiple store sites, **provided that a separate License has been purchased** for each store site.
2. You May Not:
  - i. Sublicense, rent or lease any portion of the Software
  - ii. Reverse engineer, de-compile, disassemble, modify, translate, make any attempt to discover the source code of the Software, or create derivative works from the Software.

### Limited Warranty, Disclaimer and Limit of Liability

Phase Research warrants that the documentation and the original Software disk free from physical defects in material and workmanship under normal use. If at any time the Software fails to operate as described in the documentation, simply return the original disk to Phase Research and Phase Research will replace the Software at no charge or refund your purchase price, at Phase Research's option. Phase Research and its licensors do not warrant your data, that the Software will meet your requirements, or that the operation will be uninterrupted or error free.

**THE WARRANTY ABOVE IS IN LIEU OF ALL OTHERS, EITHER EXPRESSED OR IMPLIED, INCLUDING, BUT NOT LIMITED TO, THE IMPLIED WARRANTIES OF MERCHANTABILITY AND FITNESS FOR A PARTICULAR PURPOSE SOME STATES HAVE LAWS THAT MAY RESTRICT OR PROHIBIT THE LIMITATIONS SET FORTH ABOVE AND YOUR RIGHTS UNDER LAW MAY VARY ACCORDING TO THE LAWS OF YOUR STATE.**

Phase Research and its licensors shall not be liable for any incidental or consequential damages, including loss of data, lost profits or other special or indirect damages. Your rights under law may vary

---

Phase Research  
3500 W. Moore Ave. Suite M  
Santa Ana, California 92704  
Phone: (714) 850-1320 Fax: (714) 850-1502  
[fasttrack@phaseresearch.com](mailto:fasttrack@phaseresearch.com)  
<http://www.fasttracktimer.com>  
Copyright<sup>®</sup> 2005 – All Rights Reserved

Copyrights and Credits:  
Fast Track PC Software<sup>®</sup> 2005 – Phase Research. All rights reserved. Fast Track and Fast Track 2+2<sup>®</sup> are registered trademarks of Phase Research. Microsoft and Windows are registered trademarks of Microsoft Corp., registered in the U.S. and other countries.

**Fast Track<sup>®</sup>**  
PC SOFTWARE



## Table of Contents

<b>SECTION 1 INTRODUCTION .....</b>	<b>1</b>
1-1 General .....	1
1-2 Features.....	1
1-3 PC System Requirements .....	2
1-4 Using This Manual .....	2
<b>SECTION 2 INSTALLING THE SOFTWARE .....</b>	<b>5</b>
2-1 Compact Disk Installation .....	5
<b>SECTION 3 CONFIGURING &amp; USING THE SOFTWARE .....</b>	<b>7</b>
3-1 Scope .....	7
3-2 Startup.....	7
3-3 Main Window .....	8
3-4 Configurations .....	9
3-4.1 Modem Configuration .....	9
3-4.2 Direct Port Configuration .....	10
3-4.3 Network ConnectME .....	10
3-4.4 Network E3.....	11
3-4.5 Disconnect Timer .....	12
3-4.6 Site.....	13
3-5 File.....	17
3-5.1 Open .....	18
3-5.2 Save / Save As .....	18
3-5.3 Print .....	19
3-5.4 Print Preview .....	20
3-5.5 Print Setup .....	20
3-5.6 Exit .....	21
3-6 Status Bar.....	21
3-7 Config .....	21
3-8 Site.....	21
3-9 Site Parameters .....	22
3-10 Connect.....	37
3-11 Disconnect .....	37
3-12 Remote Control .....	38
3-13 Download .....	40
3-14 Upload .....	41
3-15 Scheduler .....	41
3-16 Reports.....	42
3-17 ACL .....	43
3-18 Enterprise.....	44
3-19 Help .....	46
<b>SECTION 4 IP CONFIGURATION .....</b>	<b>49</b>
4-1 IP Configuration .....	49
4-1.1 XPort Devices – Device Installer 3.6 .....	49

---

4-1.2 XPort Devices – Device Installer 3.1 .....	53
4-1.3 A-Top Devices .....	54
<b>APPENDIX I .....</b>	<b>57</b>
Analyzing Data .....	57
Archive Report .....	58
Event Report .....	59
Period Report .....	60
Target Report .....	61
Car Report .....	62
On Demand Reports .....	63
<b>APPENDIX II .....</b>	<b>65</b>
Typical Applications .....	65
Direct Connect .....	65
Modem to Modem Connect .....	66
Network Connect .....	67
Dual Connect .....	68
<b>APPENDIX III .....</b>	<b>69</b>
Printer Report Tapes .....	69





---

## SECTION 1 INTRODUCTION

---

### 1-1 General

The Fast Track PC Software (the Software) is an application that allows your computer to communicate with your Fast Track 2+2<sup>®</sup> 2000 Series Drive-Thru Timer (Fast Track 2+2<sup>®</sup> Timer). The Software application allows a user to use a PC as a remote console to operate/program or view the Fast Track 2+2<sup>®</sup> Timer or download data for viewing and analyzing. This manual describes how to install and use the Software application on your personal computer and to communicate with your Fast Track 2+2<sup>®</sup> Timer. The Software operates on a personal computer (PC) using Microsoft Windows 95 or higher operating system platform.

The Software requires an interface between the PC and the Fast Track 2+2<sup>®</sup> Timer. This interface may be a cable connecting your PC directly to the RS-232 port of the Fast Track 2+2 Timer, an Ethernet network interface card (NIC) using a local area network (LAN) or wide area network (WAN) or a telephone line.

See - [Appendix II](#) for the different connection types.

### 1-2 Features

- ✓ **Download Data** – Download data from a Fast Track 2+2<sup>®</sup> Timer to create report files on your PC.
- ✓ **Network Utilities** – Manage your Ethernet connection(s).
- ✓ **Create a Download Schedule** – Create a schedule for an automatic daily download at a specified time.
- ✓ **Upload** – Upload information to your Fast Track 2+2<sup>®</sup> Timer
- ✓ **ACL** – Create batch programs.
- ✓ **View Reports** – View the created reports on your PC.
- ✓ **Print Reports** – Print your created reports to a network or local printer.
- ✓ **Enterprise** – The ability to compile the data from multiple sites.
- ✓ **Remote Operation** – Manage your Fast Track 2+2<sup>®</sup> Timer from your PC.

### 1-3 PC System Requirements

- ✓ The Fast Track PC Download and Remote Control Software application.
- ✓ A Personal Computer:
  - Windows 95<sup>®</sup>\* or later operating system
  - 133Mhz Pentium or greater
  - Standard mouse
  - 32 Mb of RAM
  - At least 10Mb of free hard disk space (*additional space is required for data download*)
  - CD ROM drive
- ✓ One or more Fast Track 2+2<sup>®</sup> 2000 and/or 3000 Series Drive-Thru Timer.
- ✓ One or more of the following types of interface for communication:
  - RS-232 cable
  - Hayes compatible Modem (*Fast Track 2+2<sup>®</sup> Timer must have the optional modem installed*)
  - Network Interface Card (*Fast Track 2+2<sup>®</sup> Timer must have the optional Ethernet network interface card installed*)

**\*Important: Windows 95<sup>®</sup> users must have either Service Pack 1 or Winsock2 installed prior to installation of this Software. Patches are included in the Software CD.**

### 1-4 Using This Manual

Different typefaces are used throughout this guide and are used as follows:

<i>(Italics)</i>	Represents a particular key stroke on the keyboard
<i>Italics</i>	Used as commands to left click your mouse on
<b>Warning!</b>	Alert you to possible operational problems or loss of information
<b>Note:</b>	Lets user know that additional information may be obtained elsewhere
<i>See -</i>	Hyper linked references to another section within this guide or to the Internet





---

## SECTION 2 INSTALLING THE SOFTWARE

---

### 2-1 Compact Disk Installation

**\*\*\* IMPORTANT: PLEASE READ BEFORE INSTALLING! \*\*\***

This procedure assumes your Start | Run or the Command Prompt is available. Hitting the Escape (*Esc*) key at any time will abort this process

1. It is strongly recommended to exit all programs before installing your software.
2. Insert the CD into your CD ROM drive.
3. Click START | RUN and type “X:\setup” without the quotes. X is the designated drive letter assigned to your CD ROM drive
4. This starts the Install Shield<sup>®</sup> Wizard welcoming you to the Fast Track Software installation. Click *Next* to continue with the installation or *Cancel* to quit.
5. Software license agreement. Click *I accept the terms of the license agreement*, if you agree with the terms and continue with the installation, Click *I do not accept the terms of the license agreement*, to cancel installation and exit, or *Back* to return to the previous screen. Click on the print button to print the license to your printer.
6. Enter the user name and company name (both fields required).
7. Select the type install, typical or custom.
  - a. **Typical** ~ Install is automatic files installed to C:\Program Files\Fast Track Software Suite
  - b. **Custom** ~ Choose a destination location. Click *Next* to create the default location (C:\Program Files\Fast Track Software Suite) and continue, click *Browse* to select another location then *Yes* to confirm and then *Next* to continue or click *Back* to return to the previous screen or *Cancel* to quit.
  - c. **Custom** ~ Select the components that you would like to install. Program File, Manuals
8. Click install, Install Shield<sup>®</sup> Wizard begins transferring files to your hard drive. Setup is complete when the files have been transferred, click on *Finish* to end.
9. Remove the disk from CD ROM drive.

Installation of Software is now complete and ready for configuration.

**NOTE:** The CD contains other support utilities that are not installed at time of installation. These files maybe copied into your Fast Track directory at any time.

---



---

## SECTION 3 CONFIGURING & USING THE SOFTWARE

---

### 3-1 Scope

The Software creates report files on your PC. These files are based on data collected by the Fast Track 2+2<sup>®</sup> Timer and downloaded to your computer using this software. Software helps you manage your Fast Track 2+2<sup>®</sup> Timer from your PC by emulating the front panel of the Fast Track 2+2<sup>®</sup> Timer.

### 3-2 Startup

When you start the Software for the first time, it displays the configuration dialog boxes to configure your modem configuration, direct port configuration and site configuration. *See - section [3-4 Configurations](#).*



Start Menu

To start the Software application, locate your Software icon under Programs in your Windows Start menu and click.

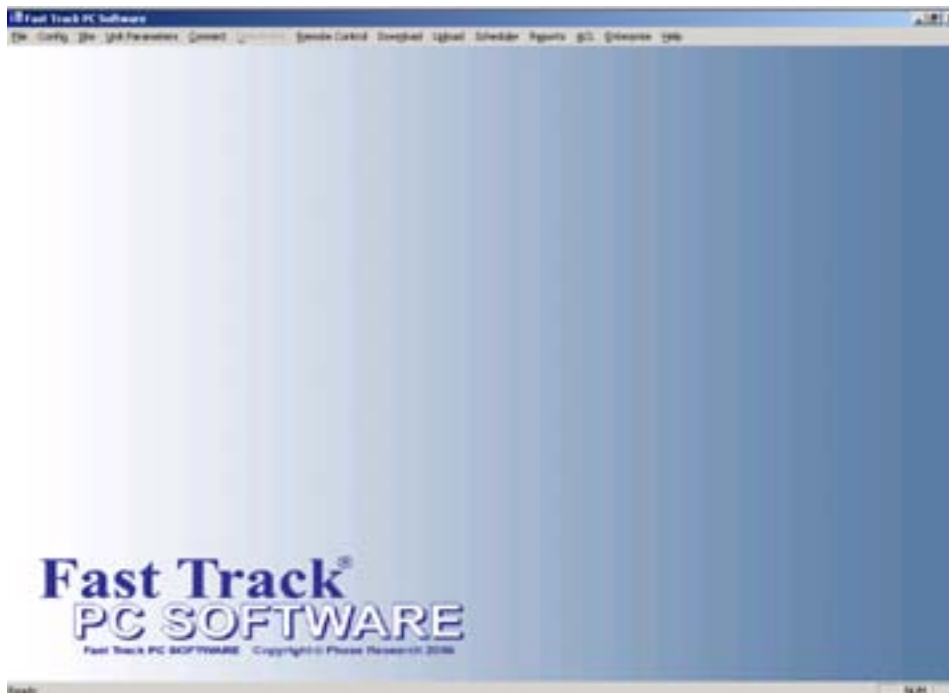
**Note:** Refer to your Windows operating system user guide to place a shortcut on your Desktop.

### 3-3 Main Window

The Software main window:

- ✓ A standard window title bar with buttons for minimizing, maximizing, and closing the window
- ✓ A menu bar with commands for controlling the system
  - File
  - Config
  - Site
  - Unit Parameters
  - Connect
  - Disconnect
  - Remote Control
  - Download
  - Upload
  - Scheduler
  - Reports
  - ACL
  - Enterprise
  - Help
- Black text for active Menu Bar commands
- Grey text for inactive Menu Bar commands
- ✓ A workspace window for displaying data
- ✓ A status bar to view application status

**Main Window**



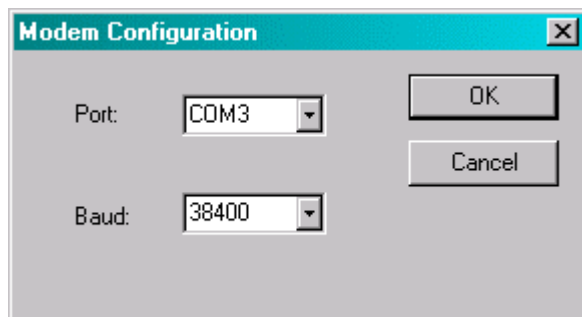
### 3-4 Configurations

Initial configuration of the Modem, Direct Port, and Site is performed when the application is opened for the very first time. Each configuration may be changed at anytime while running the application. To change direct port or modem configuration, click on *Config* from the Menu Bar and select either: *Modem*, *Direct Port* or to change the Network configuration click *Network ConnectME* for ALL ConnectME devices or *Network E3* for ALL Rabbit devices. To edit, delete, or add to the Site Configuration, click on *Site* from the Menu Bar.



Config

#### 3-4.1 Modem Configuration



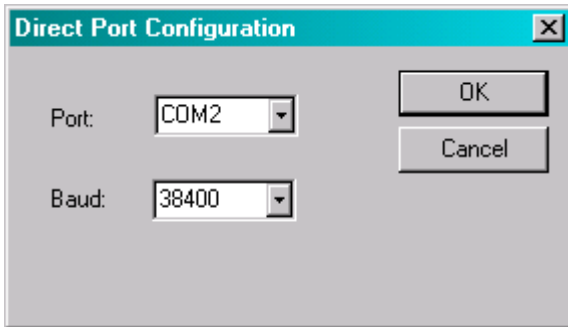
Modem Configuration

The Modem Configuration dialog box lets you select the COM port and baud rate used for the PC and modem for a remote connection via telephone line connection. This is used only if the Fast Track 2+2<sup>®</sup> Timer's that you are connecting to have the optional modem installed. If only a Direct Connect using RS - 232 cable is used, just click *OK* to continue using the default settings.

**Note:** Refer to your PC's user manual for proper port and baud rate settings.

- |        |  |
|--------|--|
| Port   | Select the communication port to be used for remote communication. It is the serial communication port on the PC used by the modem. COM 1 – COM 16.                  |
| Baud   | Select the communication speed used by the modem. The selection is less then or equal to the modem speed. The default setting is 38400, which is used by 56K modems. |
| OK     | Updates the configuration file and closes the Modem Configuration dialog box.  |
| Cancel | Closes Modem Configuration dialog box without updating the configuration file.   |

### 3-4.2 Direct Port Configuration



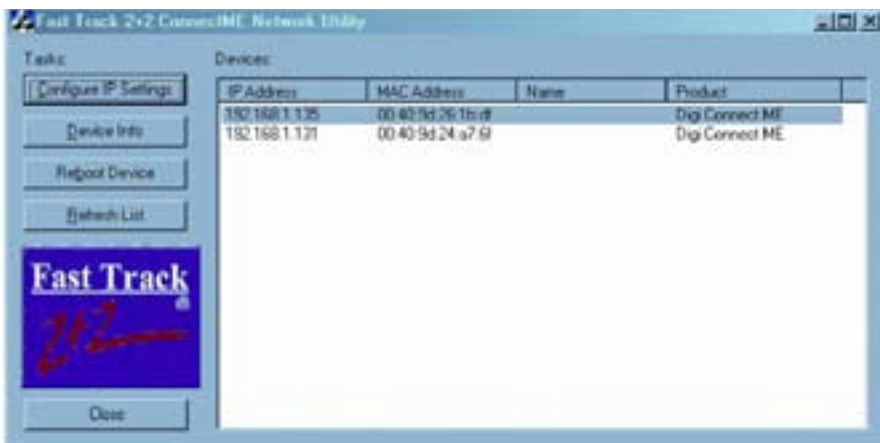
**Direct Port Configuration**

The Direct Port Configuration dialog box lets you select the COM port and baud rate for a direct connection between the PC and Fast Track 2+2<sup>®</sup> Timer using an RS-232 cable.

**Note:** Refer to your PC’s user manual for proper port and baud rate settings.

- Port Select the communication port to be used for direct communication. It is the serial communication port on the PC used by the RS -232 cable. COM 1 –COM 16.
- Baud Select the communication speed used by the RS -232 cable connection. The selection is less then or equal to the communication speed to the Fast Track 2+2<sup>®</sup> Timer. The default setting is 38400, which is the proper speed to communicate with the Fast Track 2+2 Timer.
- OK Updates the configuration file and closes the Direct Port Configuration dialog box.
- Cancel Closes Direct Port Configuration dialog box without updating the configuration file.

### 3-4.3 Network ConnectME



**Connect ME Network Utility Window**

The ConnectME device is configured through the Fast Track PC Software. Launch the Fast Track PC Software and click on Config then Network ConnectME in the menu bar. This will bring up the Fast Track ConnectME Network Utility window.

**FAST TRACK PC SOFTWARE  
 VERSION 2.21**

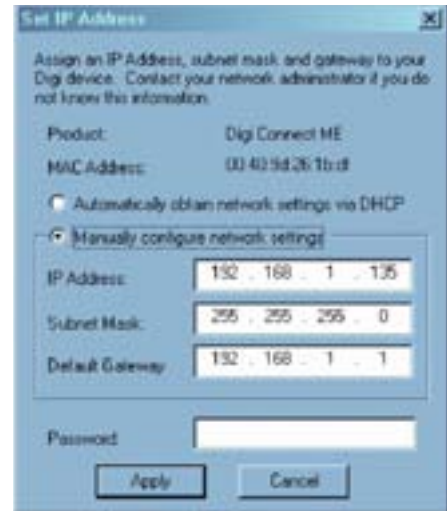
The ConnectME device has already been configured at Phase Research and is set to automatically obtain network settings through your DHCP. You can view the IP address using the Phase Research ConnectME Network Utility window so you can enter it into the site configuration.

If you choose to change the IP address, click on the Configure IP Settings button in the utility window.

To change the settings click on “Manually configure network settings” radial. This will allow you to edit the IP Address, Subnet Mask and the Default Gateway. After you have made the changes, enter the password ‘dbps’ then click on the Apply button. Once the settings have been applied, reboot the device and refresh the list

You should now see the updated settings you have applied.

**Note:** For XPort or A-Top Ethernet device configurations *see* [Section 4](#)



**Set IP Address**

**3-4.4 Network E3**

The E3 unit does not have dynamic IP capability and is configured with the following:

IP Address: 192.168.97.96  
 Gateway: 192.186.97.5  
 Mask: 255.255.255.0

Click on Network E3 to use the E3 Locate and Configure Utility to configure all E3 devices. All units to be configured must be on the local network.

When there are multiple units on the network, identify the unit you need to change by the unique MAC address. The serial number located on the E3 engine board will match the last 6 characters of the MAC address.



**E3 Locate & Configure Utility**

**FAST TRACK PC SOFTWARE  
VERSION 2.21**



**Configure E3 IP Parameters**

A search is automatically done as soon as the Network E3 is launched. Clicking on the search button will manually search if the program is already open and a new unit is added to the network. Once the unit is found you can configure it by clicking on the Configure button. If more than one unit found, a list of MAC addresses is displayed to select a unit from.

The configuration dialog box allows you to set up the IP address, mask, gateway and port settings for your unit.

Once you click OK the unit will reset so the new settings will take affect.

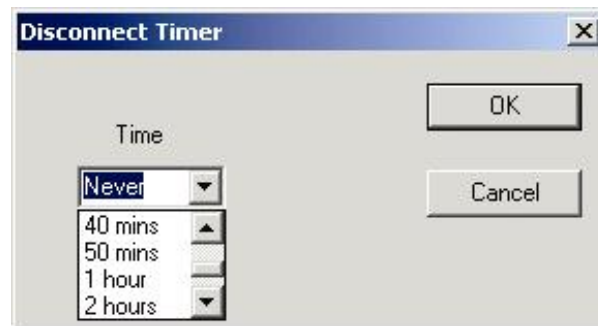


**Updated IP**

You may now click exit and configure your unit. See section [3-4.6 Site](#)

### 3-4.5 Disconnect Timer

The disconnect Timer feature allows you to create a timeout in hours or minutes with your session to the Fast Track timer automatically.

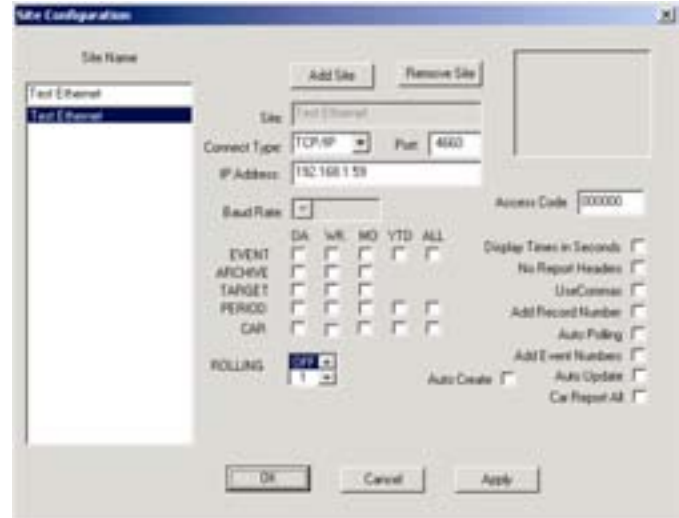


**Disconnect Timer**

**FAST TRACK PC SOFTWARE  
 VERSION 2.21**

**3-4.6 Site**

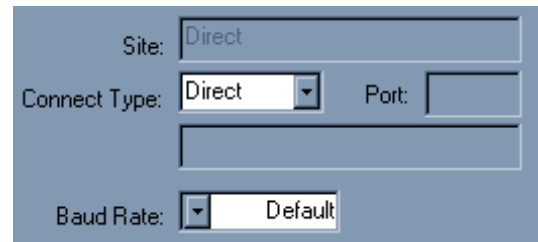
The Site Configuration dialog box lets you add, edit, and remove Fast Track 2+2<sup>®</sup> Timer sites from the Site Name list. Each site can be configured for the type of connection and the type of reports to create from the downloaded data. When a new site is added to the Site Name list a new file folder is created using that site name. (Example: The site Fast Track Burger will create a file folder C:\ ... \Fast Track Software Suite\Fast Track Burger). All data that has been downloaded from this site will be stored in this file folder. **Everything except for the site name can be edited.**



**Site Configuration**

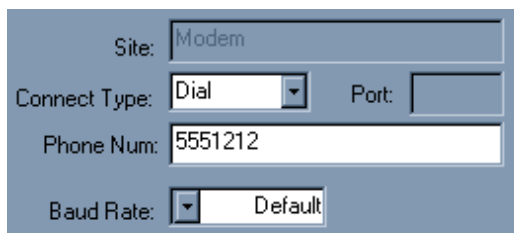
**Direct Connect Type**

When the Connect Type is selected for Direct, only the Baud Rate can be edited. The Baud Rate is usually set for Default and uses the assigned baud rate you pre-selected when the Direct Port Configuration was configured. Selecting a different baud rate in this field will override the baud rate in the Direct Port Configuration.



**Direct Connect Setup**

**Dial Connect Type**



**Dial Connect Setup**

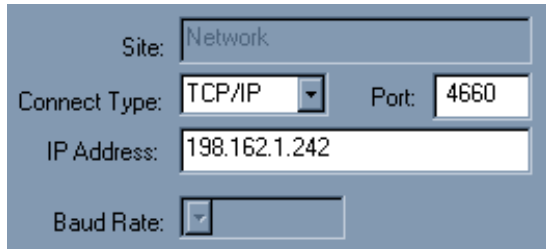
When the Connect Type is selected for Dial, the Baud Rate and the Phone Num can be edited. Enter the telephone number using numbers only, no spaces or hyphens, of the Fast Track 2+2<sup>®</sup> Timer you want to connect to. With Fast Track 2+2<sup>®</sup> Timers that share a telephone line, a security access code is needed after the phone number, using no spaces, for phone line switching. Automatic three port Line Share Controllers (supports 2 devices) have a security

access code: **,,,#11,#11,#11,#11**. Automatic four port Line Share Controllers (supports 3 devices) have a security access code: **,,,#11,#11,#11,#11** for the fax port and **,,,#22,#22,#22,#22** for the modem port. **(Note: Line Share Controller is a Phase Research configured device for phone line sharing.)**

The Baud Rate is usually set for Default and uses the assigned baud rate you pre-selected when the

Direct Port Configuration was configured. Selecting a different baud rate in this field will override the baud rate in the Direct Port Configuration.

### TCP/IP Connect Type



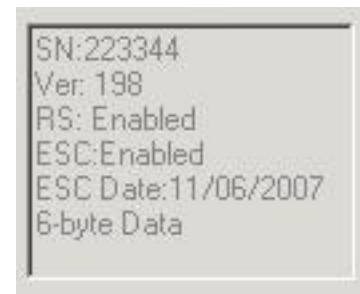
The screenshot shows a dialog box titled "TCP/IP Connect Setup". It contains the following fields:

- Site: Network
- Connect Type: TCP/IP (dropdown menu)
- Port: 4660
- IP Address: 198.162.1.242
- Baud Rate: (dropdown menu)

TCP/IP Connect Setup

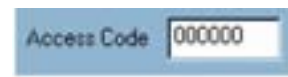
When the Connect Type is selected for TCP/IP. Enter the IP Address OR domain name of your Fast Track 2+2<sup>®</sup> Timer. (**Note:** Check with your network administrator for the IP Address or domain name of the Fast Track 2+2 Timer. If using a domain name you must have a DNS server.)

**Site Data** - This field displays the data for a unit that you have already downloaded from. This displays the units' serial number, the version of the firmware the RS port and ESC are enabled or disabled and the expiration date of the ESC.



Site Data

**Access Code** - A unique code that allows access to the Fast Track 2+2<sup>®</sup> Timer.



Access Code

**Warning!** An error message will occur if the Access Code does not match any 1 of the 5 access codes in the Fast Track 2+2<sup>®</sup> Timer.



Display Times in Seconds

**Displays Times in Seconds** - Select this box to display your Reports in seconds.



No Report header

**No Report Header** - Select this box for no header in your report (store, store number, phone

UseCommas

Use Commas

Add Record Number

Add Record Number

Auto Polling

Auto Polling

Add Event Numbers

Add Event Numbers

Auto Update

Auto Update

Car Report All

Car Report All

	DA	WK	MO	YTD	ALL
EVENT	<input type="checkbox"/>	<input type="checkbox"/>	<input type="checkbox"/>	<input type="checkbox"/>	<input type="checkbox"/>
ARCHIVE	<input type="checkbox"/>	<input type="checkbox"/>	<input type="checkbox"/>	<input type="checkbox"/>	<input type="checkbox"/>
TARGET	<input type="checkbox"/>	<input type="checkbox"/>	<input type="checkbox"/>	<input type="checkbox"/>	<input type="checkbox"/>
PERIOD	<input type="checkbox"/>	<input type="checkbox"/>	<input type="checkbox"/>	<input type="checkbox"/>	<input type="checkbox"/>
CAR	<input type="checkbox"/>	<input type="checkbox"/>	<input type="checkbox"/>	<input type="checkbox"/>	<input type="checkbox"/>

Report Options

ROLLING   0=Disabled

Rolling

Auto Create

Auto Create

numbers, etc.).

**Use Commas** - Select this box to set up a delimited report to import into a database or spreadsheet program that supports ASCII files.

**Add Record Number** – Select this box to add record numbers to the left column of the data reports. These numbers will be in ascending order.

**Auto Polling** - Select the check box to include the Fast Track 2+2<sup>®</sup> Timer for multi-site downloads and Automatic Command Line. *See - section [3-13 Download](#) and [3-17 ACL](#).*

**Add Event Number** – Select this box to add event numbers to the left column of the event reports. These numbers will be in ascending order.

**Auto Update** – This site is to be included with the Enterprise function.

**Car Report All** – This site will only report events by car when de-selected and ALL events when selected

**Selecting report options** - The Site Report Option dialog boxes lets you select the type of reports to be created using the downloaded data from the Fast Track 2+2<sup>®</sup> Timer you have selected. Select the type of preformatted reports to be automatically created from the downloaded data. *See - [APPENDIX I](#)*, for the examples of preformatted reports.

**Rolling** – Select this field to create an event report for a specified time period. The time period is in days only, 1 to 99 days. Select 0 to disable.

**Auto Create** - Select this box to automatically create the selected reports when the data is finished downloading.



**OK, Cancel and Apply**

**OK** - Updates the configuration and closes the Site Configuration dialog box.

**Cancel** - Closes the Site Configuration dialog box without updating the configuration.

**Apply** - Updates the configuration without closing the Site Configuration dialog box

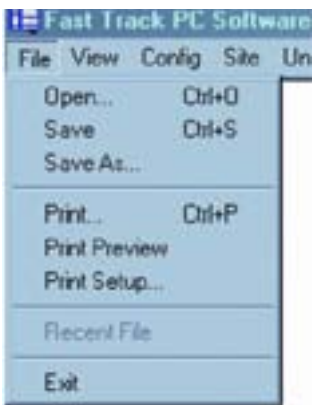
### 3-5 File

The type of reports Event, Archive, Target, and Period may be created for Daily, Weekly, Monthly, Year to Date (YTD), and All time periods. There are a total of 17 types of reports you can create. The Software saves these reports as an American Standard Code for Information Interchange (ASCII) type file into the file folder of the configured Site stored on your PC. The files can be viewed or edited using third party word processing, spreadsheet, or data base software that supports ASCII.

Software file names include alpha characters identifying the time period of report, followed by numeric characters identifying the date the report was created for. The file extension identifies the type of report.

	Time Period	Current Date	Report Type
	<b>DA</b>	<b>021119</b>	<b>. A_R</b>
	Time Period	Date	Type of Reports
Daily	DA	YYMMDD	Event E_R
Weekly	WK		Period P_R
Monthly	MO		Archive A_R
Rolling	RLG		Target T_R
Year to Date	YTD		
All	ALL		

#### Files

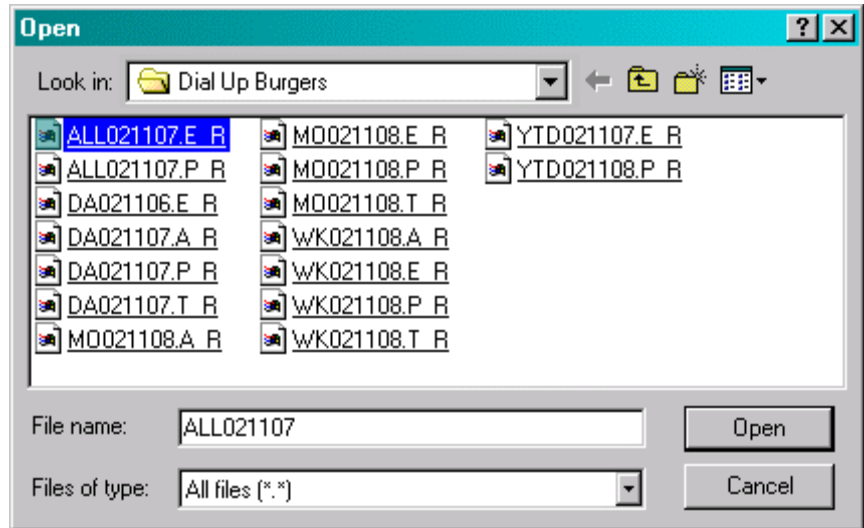


Menu Bar - File

When you click on *File* from the Menu Bar, a pull down list is displayed and several selections are available to choose from: Open, Save, Save As, Print, Print Preview, Print Setup, and Exit.

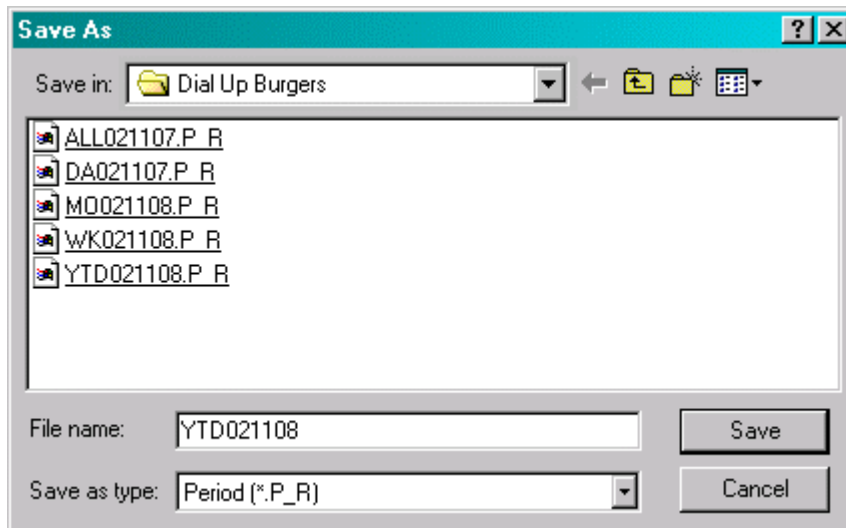
### 3-5.1 Open

When you select *Open* from the Menu Bar, a standard window Open dialog box opens up allowing you to open a report from your list of previously SAVED reports. The Open dialog box shown in Figure 20 shows sixteen (16), different types of report files the Software can create.



Open dialog box

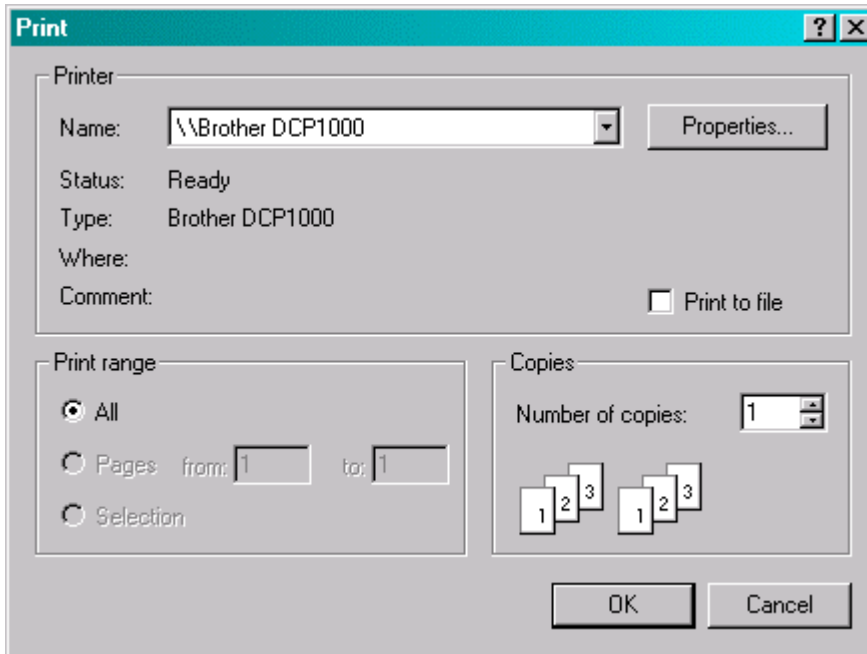
### 3-5.2 Save / Save As



Save As dialog box

When you select, *Save* or *Save As*, from the Menu Bar a standard window Save As dialog box opens up allowing you to save the report you have created. Both selections will save the current open report to the proper folder. Folders are created automatically for each Site you configure. By default the program will save the current report as to how the report was created during Report Option or Reports (*See- section [3-4.6 Site](#) and [3-16 Reports](#)*).

### 3-5.3 Print



**Print**

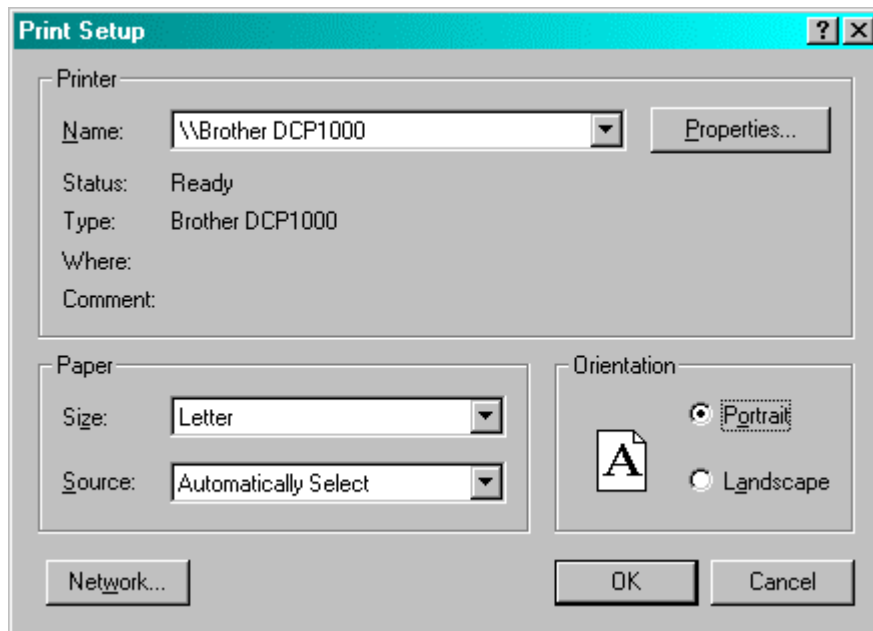
When you select *Print* from the Menu Bar, a standard window Print dialog box opens up allowing you to print the current open report to a local or network printer.

The Print dialog box allows you to select a printer and setup how many copies to print and what print range to use. Under Page range, specify the portion of the document you want to print. If you click Pages, you must also enter the page numbers or page ranges you want to include, or both.

### 3-5.4 Print Preview

When you select *Print Preview* from the Menu Bar, a preview screen is displayed showing the current open report to be printed. You can view it *One Page* at a time or with larger reports *Two Page* at a time. You navigate through your report one page at a time by clicking *Next Page* or *Prev Page*. The status bar keeps track of what page you are currently on. You can *Zoom In* or *Zoom Out* on any page to view pertinent data.

### 3-5.5 Print Setup



**Print Setup**

When you select *Print Setup* from the Menu Bar, a standard window Print Setup dialog box opens up allowing you to configure a printer to print your reports too. You may change the paper orientation to portrait or landscape. You can also change the paper size and paper source.

### **3-5.6 Exit**

When you select *Exit* from the Menu Bar, the Software application closes.

**WARNING!** Any manual report that was created and not saved will be lost. The data is not lost so the manual report can be recreated without downloading from the Fast Track 2+2<sup>®</sup> Timer.

### **3-6 Status Bar**

The Status Bar is displayed at the bottom of the Software application. System status and hints about Menu Bar commands display on the left side while an indicator on the right shows if Caps Lock, Num Lock or Scroll Lock is on.

### **3-7 Config**

*See - section [3-4.1 Modem Configuration](#) , [3-4.2 Direct Port Configuration](#) and [3-4.3 Network ConnectME](#) or [3-4.4 Network E3](#).*

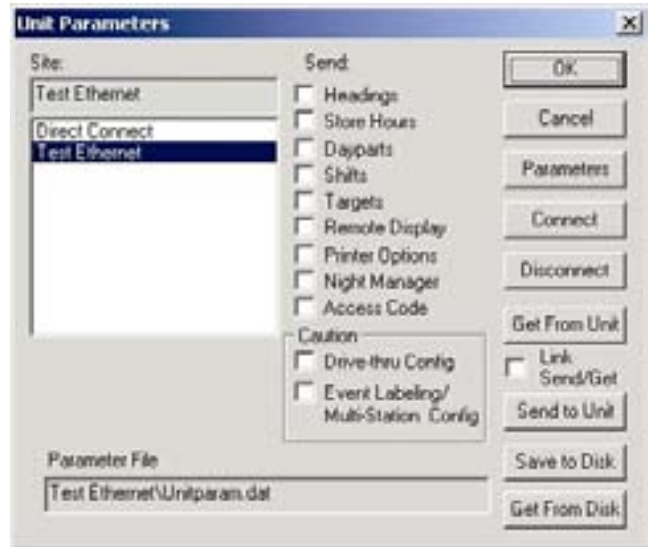
### **3-8 Site**

*See - section [3-4.6 Site](#).*

### 3-9 Site Parameters

Site Parameters is used to download the parameters from your Fast Track 2+2<sup>®</sup> Timer to your personal computer make necessary changes to the parameters and then upload them back to your Fast Track 2+2<sup>®</sup> Timer. You may also save your parameter configuration or those parameter changes as a file on your personal computer or onto removable media as a backup.

The caution box surrounding the check box for Drive-thru Config and the Event Labeling/Multi-Station Config is a warning to the user that the Fast Track 2+2<sup>®</sup> Timer's data can be distorted when the new configuration of selected box is checked is uploaded to the Fast Track 2+2<sup>®</sup> Timer during operational hours. The best time to upload this information is during the hours that the drive-thru window is closed.



Site Parameters

<b>OK</b>	Closes Unit Parameters window
<b>Cancel</b>	Cancels the unit parameters function
<b>Parameters</b>	Used to view/edit parameters settings from a timer or saved .spd file.
<b>Connect</b>	Connects to a timer you have selected from site.
<b>Disconnect</b>	Disconnects the session from the timer.
<b>Get From Unit</b>	Gets the parameters from the timer you are connected to display and/or edit.
<b>Link Send/Get</b>	Sends parameter changes to timer / gets parameters from timer and stores it as a .dat file in the directory of the timer.
<b>Send to Unit</b>	Sends parameter changes that you have made and selected to timer.
<b>Save to Disk</b>	Saves the timers parameters as an .spd file.
<b>Get From Disk</b>	Gets a saved .spd parameter file.

**Store Hours** – This will allow you to set your store hours for opening and closings for each day during the week.

The Fast Track 2+2<sup>®</sup> Timer only uses these times in fifteen minute increments and uses AM and PM. When setting the time for store hours the software will compensate for times such as 6:22 and will automatically set that value to 06:15 AM. The program will always move *back* to the closest fifteen-minute interval. You can use either an A or a P to designate AM or PM or set the time for 24 hour s. An example would be 6:00p or 18:00 will both give you 06:00PM. If you set the time for 12:00 this will give you 12:00PM and 00:00 will give you 12:00AM. An entry that you make in which the program cannot interpret will give you the error message “Bad Open Time Value” or “Bad Close Time Value”.

To set up a store for a 24 hour day set the close time the same as the open time or type 24hours. You can also select the first day of the week and the first month of the year for your timer.

To close on a particular day, type close in the open time for the day you wish to close on.



**Store Hours**

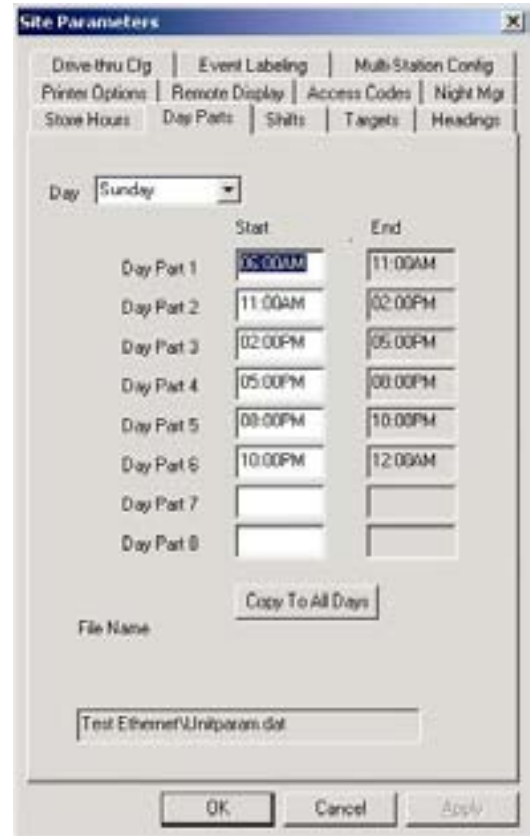
**FAST TRACK PC SOFTWARE  
 VERSION 2.21**

**Day Parts** – This allows you to break each day into smaller parts or day parts and is used to group data for viewing and reporting. Select the day of the week Sunday through Saturday and then edit the times for your day parts.

The Fast Track 2+2<sup>®</sup> Timer only uses these times in fifteen minute increments and uses AM and PM. When setting the time for store hours the software will compensate for times such as 6:22 and will automatically set that value to 06:15 AM. The program will always move *back* to the closest fifteen-minute interval. You can use either an A or a P to designate AM or PM or set the time for 24 hours. An example would be 6:00p or 18:00 will both give you 06:00PM. If you set the time for 12:00 this will give you 12:00PM and 00:00 will give you 12:00AM. An entry that you make in which the program cannot interpret will give you the error message “Bad Open Time Value” or “Bad Close Time Value”.

If all of the day parts are the same for each day you can use the *Copy To* feature to copy the same settings to each day. To *delete* a day part, highlight the first day part you want to remove and press the delete key. All day parts that follow will automatically be removed. To *add* a new day part move the cursor to first unused day part number and enter the time.

The ending time of each day part coincides with the starting time of the next day part for the same day, though you may use different day parts for each day of the week. Day part 1 always starts at the opening time for the day, and the last programmed day part always ends at the closing time for the day.



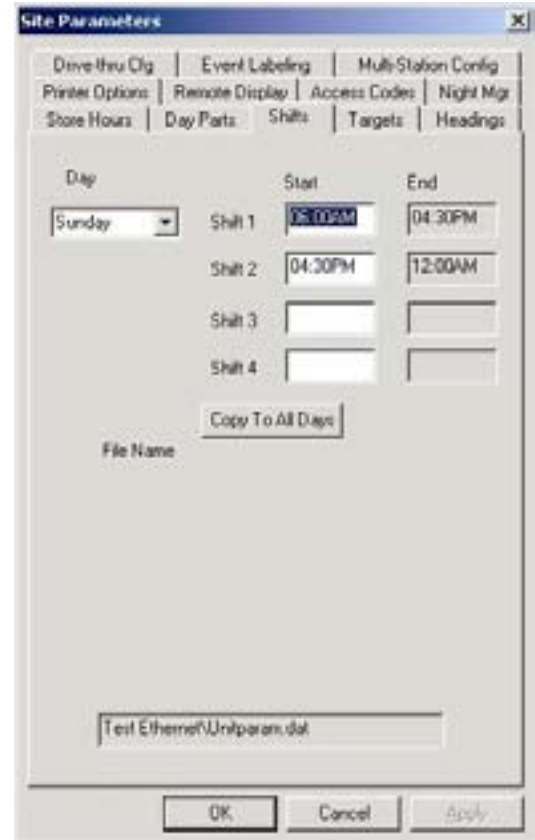
**Day Parts**

**Shifts** - This allows you to break each day into smaller parts and is used to group data for view ing and reporting. Select the day of the week Sunday through Saturday and then edit the times for your shift.

The Fast Track 2+2<sup>®</sup> Timer only uses these times in fifteen minute increments and uses AM and PM. When setting the time for store hours the software will compensate for times such as 6:22 and will automatically set that value to 06:15 AM. The program will always move *back* to the closest fifteen-minute interval. You can use either an A or a P to designate AM or PM or set the time for 24 hours. An example would be 6:00p or 18:00 will both give you 06:00PM. If you set the time for 12:00 this will give you 12:00PM and 00:00 will give you 12:00AM. An entry that you make in which the program cannot interpret will give you the error message “Bad Open Time Value” or “Bad Close Time Value”.

If all of the shifts are the same for each day you can use the *Copy To* feature to copy the same settings to each day. To *delete* a shift, highlight the first shift you want to remove and press the delete key. All shifts that follow will automatically be removed. To *add* a new shift move the cursor to first unused shift number and enter the time.

The ending time of each shift coincides with the starting time of the next shift for the same day, though you may use different shifts for each day of the week. Shift 1 always starts at the opening time for the day, and the last programmed shift always ends at the closing time for the day.



**Shifts**

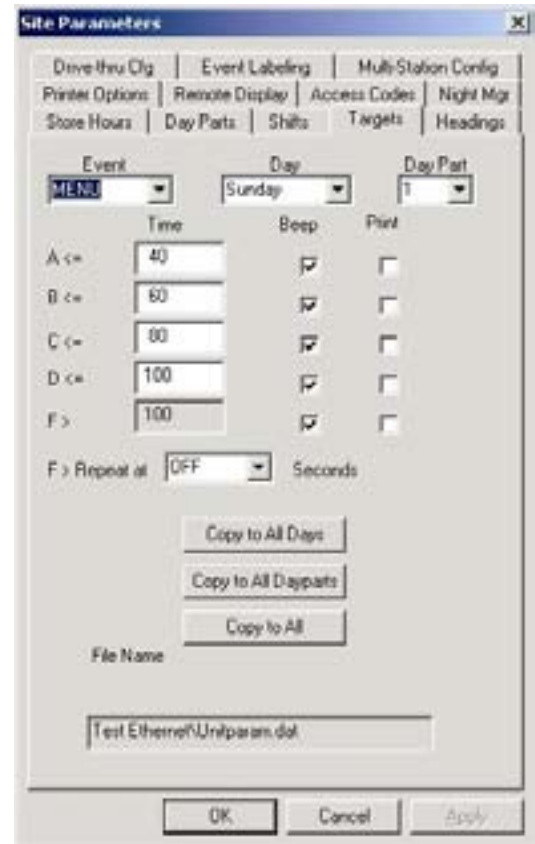
**FAST TRACK PC SOFTWARE  
 VERSION 2.21**

**Targets** – This will allow you to create a system of target times, audible indicators, and letter grades for any or all programmed events. Select the desired targets (vehicle detection points) from the events pull down list. Select the day of the week and the desired day part. Select the grade (A, B, C, etc.) for which you wish to set or change the target time. If you do not want targeting for a particular event, set the “A” grade’s target time to zero.

The target time for B must be equal or greater than that for A; the target time for C must be equal to or greater than that for B; and the same applies through the entire sequence of letters for grades. The Fast Track 2+2<sup>®</sup> Timer adjusts automatically to ensure this.

Pass/Fail grading may be used rather than letter grading: Set all letter grades except F to the same time – the maximum time allotted to the event (MENU, GREET, etc.) to achieve a passing grade. For example, if you want to make 10 seconds the (Pass) time, set A, B, C, and D to a time of 10 (the selected event must occur within this amount of time in order to “pass”).

Select Beep for the grade, the Remote Display will beep when the selected event exceeds the target time you have selected. Select print for the selected grade the Fast Track 2+2<sup>®</sup> Timer will print out every car that falls within the particular grades’ target time. You may have your Remote Display repeat the beeps. The Remote Display will sound two short beeps at your choice of intervals of 2, 5, 10, 15, or 30 seconds or disable the repeat beep by selecting off.



**Targets**

Click “Copy to All Days” to copy the Event and Day Part target times to every day of the week (Sunday through Saturday).

Click “Copy to All Day Parts” to copy the Event and Day to all of the Day Parts.

Click “Copy to All” to copy the Event target to all of both the Day and the Day Parts.

**Headings** – This lets you enter a header, which you can print using the Print Header function on the Menu screen of your Fast Track 2+2<sup>®</sup> Timer. The header can be automatically printed with some reports to identify them by their store. The header information is also displayed on the Header of the reports generated by the Download. *See - section 3-13 Download and 3-16 Reports.* Each line is capable of holding 24 characters (including spaces).

The screenshot shows a 'Site Parameters' dialog box with a tabbed interface. The 'Headings' tab is selected, displaying several text input fields. The fields are labeled 'STORE', 'NUMBER', 'MANAGER', 'PHONE', 'MODEM', and 'CITY'. Below these is a 'File Name' field containing the text 'Test Ethernet\Unlparam.dat'. At the bottom of the dialog are 'OK', 'Cancel', and 'Apply' buttons.

**Headings**

**FAST TRACK PC SOFTWARE  
 VERSION 2.21**

**Printer Options** – This lets you select automatic report printing that matches your requirements, providing 16 different report settings to give you a great deal of flexibility for your Fast Track 2+2<sup>®</sup> Timer. You can decide which report to print and when. However, Real Time (RT) reports only at the end of their time period.

Select one or more types of reports you like to print by placing a check in the appropriate box. Next select when you would like to have the reports printed *Close +* or *Time =*. With *Close +* enter a time in hours and minute that you want your event printed.

**Example:** your store closes at 01:00 AM and you would like to have a printout an hour afterwards you would type 01:00 in the field to the right of *Close +*. If you want to have your printout at close just leave the default at 00:00.

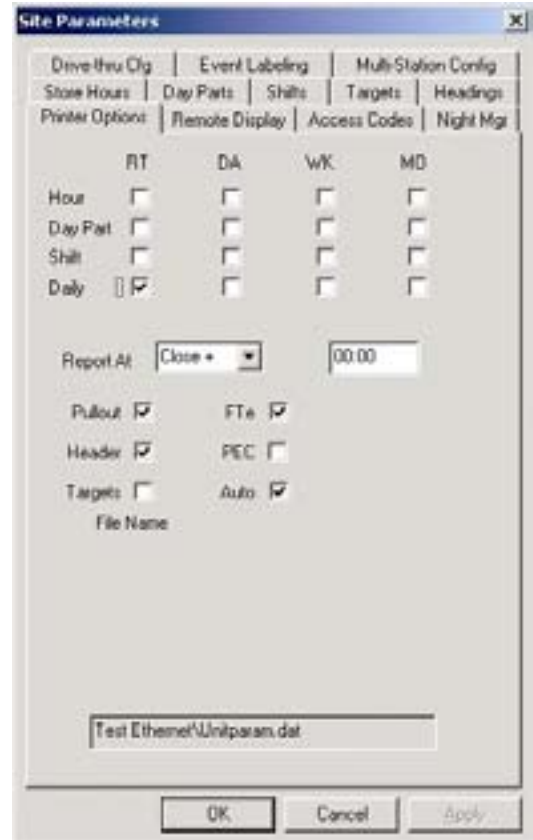
If you would like to specify the exact time of the printout then select *Time =* and then the time you would like to have the printout.

**Example:** you would like to have your Fast Track 2+2<sup>®</sup> Timer printout the report at 5:00PM you would enter *Time =* and then 5:00PM or 17:00.

The Fast Track 2+2<sup>®</sup> Timer only uses these times in fifteen minute increments and uses AM and PM. When setting the time for store hours the software will compensate for times such as 6:22 and will automatically set that value to 06:15 AM. The program will always move *back* to the closest fifteen-minute interval. You can use either an A or a P to designate AM or PM or set the time for 24 hours. An example would be 6:00p or 18:00 will both give you 06:00PM. If you set the time for 12:00 this will give you 12:00PM and 00:00 will give you 12:00AM. An entry that you make in which the program cannot interpret will give you the error message “Bad Open Time Value” or “Bad Close Time Value”.

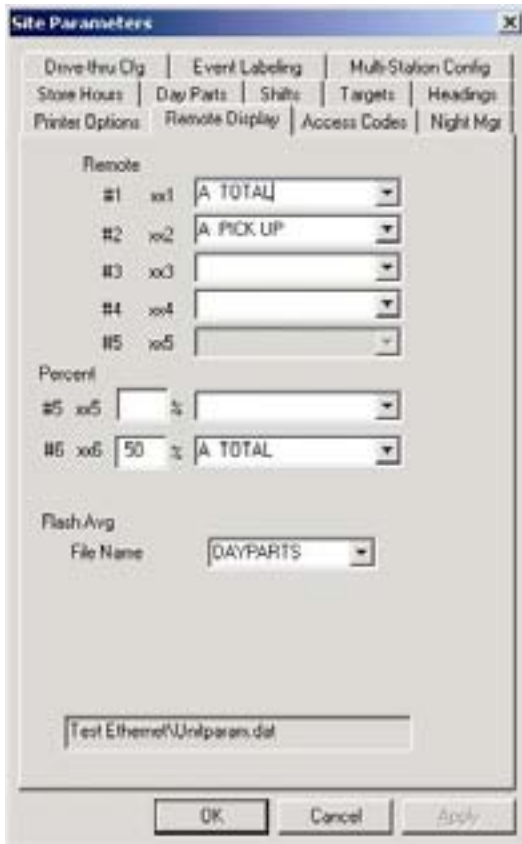
Other features that you can select or deselect are Pullout which will print the number of pullouts during the period, FTe or Fast Track Event which will print any event in the Fast Track 2+2<sup>®</sup> Timer, Header which will print the stores header with each report, PEC or Print Each Car which will report as cars move through the drive-thru, Targets to print the targets on the report, and Auto to turn ON or OFF the automatic reporting.

Events that will be printed on the automatic reports must be defined by corresponding drive-thru configurations or target settings.



**Printer Options**

**Remote Display** – This lets you select the type of information that appears on the Remote Displays. A Fast Track 2+2<sup>®</sup> Timer may have up to six Remote Displays, one standard plus up to five optional. The first five show two types of data: 1) the elapsed time for the event assigned to the Remote Display, continuously updated *during* the event; and, 2) the average time for the event computed over the day part, shift, day, week, month, or year to date (as selected by the user), *after* the car leaves the station. The average time is re-computed after each car leaves the event assigned to the Remote Display, and is shown by flashing numerals once the event station is no longer occupied.



**Remote Display Option**

Select the Remote # for the Remote Display you want to program for an event. Remote #1 corresponds with the Remote Display with address 1 Remote #2 corresponds with the Remote Display with address 2 and so on, all the way through Remote #4. Using the drop down menu select the event you want.

If you do not know the number associated with the Remote Display, remove and reconnect the five-pin DIN connector on top of the Remote Display. *Do not remove the connector by pulling on the gray cable; remove it by gently pulling on the black casing. This will prevent any damage that might occur to the cable.* This will initialize the Remote Display and allow for adjusting the volume for the audible tone beep. When the power is first applied to the Remote Display the first numbers you will see is how the Remote Display is addressed.

**Example:** If the Remote Display has 123 displayed, the first digit 1 would show at which grade the color of the display will change from green to red and turn on the beeper; the second digit 2 would show at what mode the Remote Display has, normal counting, show averages only, flash or no flash, minutes and seconds or seconds only; the third digit 3 would show what the address of the Remote Display is, this example show the address of 3.

**FAST TRACK PC SOFTWARE  
 VERSION 2.21**

The optional Remote Display setting serves as a special *percentage Remote Display* that can be used to monitor speed service, as well as to provide performance incentive for crewmembers. The percentage Remote Display shows, in either green or red digits, the percentage of cars satisfying the particular grade's target time is below a percentage selected by the user; the Remote Display's digits will be red. If the percent is equal to or higher than the selected percentage, the digits will be green. Only the two color Remote Displays have this capability. The percentage Remote Displays will display the A target only, while the other Remote Displays 1 through 4 will allow you to specify any target grade you wish.

		Switch Setting		
		1	2	3
Address	1	ON	OFF	OFF
	2	OFF	ON	OFF
	3	ON	ON	OFF
	4	OFF	OFF	ON
	5	ON	OFF	ON
	6	OFF	ON	ON

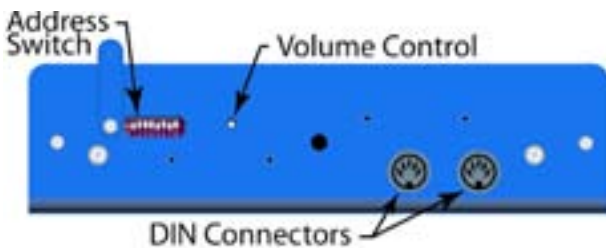


**Switch Settings**

To program the percentage Remote Display, the address of the Remote Display must be 5 or 6, which is the third digit displayed when the Remote Display is first powered on. The sixth line of the software show Remote followed by a number then a percent sign (%), the number show at which point the Remote Display will change color. The pull down menu at the right of the percent sign (%) selects the event to be monitored.

Flash Avg selects the averaging period for all Remote Displays 1 thru 4, except remotes setup for percent. You may select from the pull down menu Hourly, Day Parts, Shifts, Daily, Weekly, Monthly, Alt, or None. If you select none, no averages will be flashed.

Depending on what model of the Remote Display the data will be shown either in minute: seconds: seconds only, or percentage. Time data will be displayed only during the hours the store is open. When closed, only a colon (: ) is shown on the minutes: seconds Remote Display; seconds Remote Display is blank; and percentage Remote Display shows the percent sign (%) and the number 0.



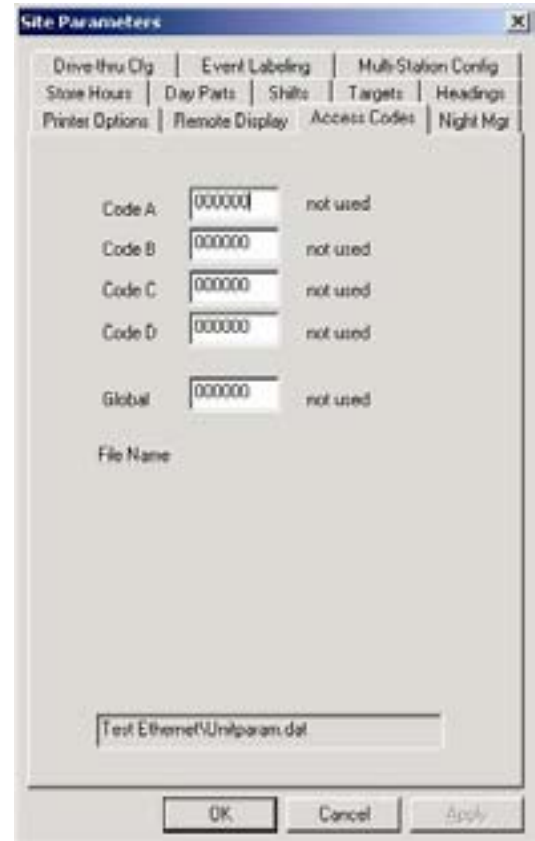
**Remote Display**

To change the address of the Remote Display, unplug the 5-pin DIN connector from the top of the Remote Display. *Do not remove the connector by pulling on the gray cable; remove it by gently pulling on the black casing. This will prevent any damage that might occur to the cable.* Remove the Remote Display from its mounting bracket. On the top of the Remote Display is a DIPswitch access cover, push the cover to gain access to the DIPswitch. Set the switches according to the

address you desire. Plug the 5-pin DIN connector into the Remote Display to verify the settings are correct. If they are correct, disconnect the DIN connector, push the DIPswitch cover back to its original position, remount the Remote Display back onto the mounting brackets and then reconnect the DIN connector.

**Access Code** – This lets you secure your Fast Track 2+2<sup>®</sup> Timer from unauthorized access. You may assign up to four Access Codes, identified as A, B, C, and D. An unused access code is displayed as “UNUSED” and a used access code is displayed as “SET”. When no access code has been set, the default code is “000000”. Once any of the access codes has been set, however, the default access code “000000” no longer allows access.

**Note:** If any or all of the access codes has been changed, you must change the access code in Site (*See – section 3-4.6 Site*) to match any access code A – D with the new change. Otherwise, you will receive an “access denied” when you try to connect to the Fast Track 2+2<sup>®</sup> Timer.



Access Codes

**FAST TRACK PC SOFTWARE  
VERSION 2.21**

**Night Mgr** – Night Manager allows you to set up a time period to track particular events over a period of time, as well as identify problems and their causes (which is particularly useful for absentee management), to view or print at the Fast Track 2+2<sup>®</sup> Timer. You can also include the PEC (Print Each Car) feature that applies to the selected time period.

The Fast Track 2+2<sup>®</sup> Timer only uses these times in fifteen minute increments and uses AM and PM. When setting the time for store hours the software will compensate for times such as 6:22 and will automatically set that value to 06:15 AM. The program will always move *back* to the closest fifteen-minute interval. You can use either an A or a P to designate AM or PM or set the time for 24 hours. An example would be 6:00p or 18:00 will both give you 06:00PM. If you set the time for 12:00 this will give you 12:00PM and 00:00 will give you 12:00AM. An entry that you make in which the program cannot interpret will give you the error message “Bad Open Time Value” or “Bad Close Time Value”.



**Night Manager**

~~ WARNING ~~

*The caution box surrounding the check box for Drive -thru Config and the Event Labeling/Multi -Station Config is a warning to the user that the Fast Track 2+2<sup>®</sup> Timer's data can be distorted when the new configuration of selected box is checked is uploaded to the Fast Track 2+2 Timer during operational hours. The best time to upload this information is during the hours that the drive-thru window is closed. For more information and guidance please contact Phase Research.*

**Drive-thru Cfg** – The Drive-Thru Configuration screen allows you set your drive off minimum and maximum times, select the display period for your activity screen and toggles your alternate mode on or off.

The Drive Off Max and Min is the time allowed for a car to go from first event such as menu to the next event such as cashier window or pick-up window, depending on your Fast Track 2+2<sup>®</sup> Timer's configuration.

The Display Period allows you to select what type of period you want to display in the activity section of the main menu of the Fast Track 2+2<sup>®</sup> Timer. The Display Period also flashes the percent (%) remote averages.

The Enable Alt allows you to enable or disable the Alt mode of the Fast Track 2+2<sup>®</sup> Timer. This will also change the current screen to configure an alternate setting for Drive Off Max; Drive Off Min; and Display Period.



**Drive-Thru Configuration**

**~~ WARNING ~~**

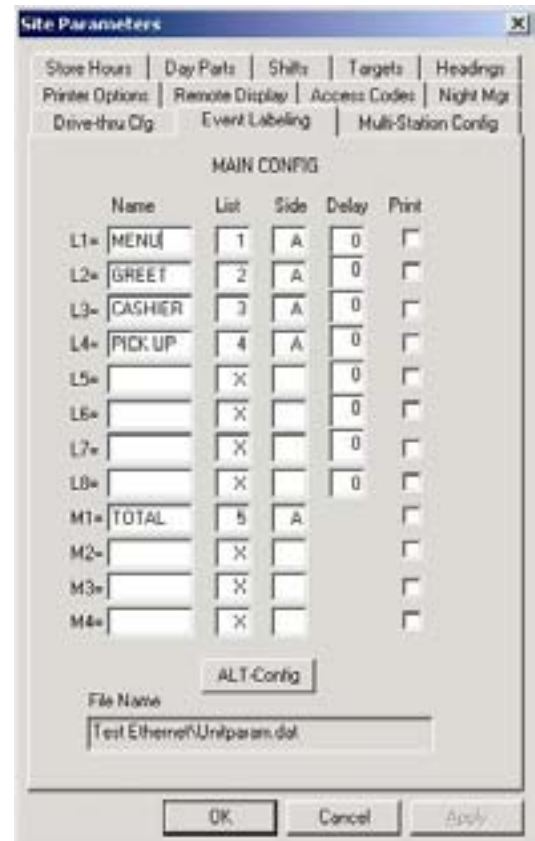
*The caution box surrounding the check box for Drive-thru Config and the Event Labeling/Multi-Station Config is a warning to the user that the Fast Track 2+2<sup>®</sup> Timer's data can be distorted when the new configuration of selected box is checked is uploaded to the Fast Track 2+2<sup>®</sup> Timer during operational hours. The best time to upload this information is during the hours that the drive -thru window is closed. For more information and guidance please contact Phase Research.*

**Event Labeling** – This will allow you to label (up to 8 alpha-numeric characters) your single station and multi-station events. You can also list the order in which the events are displayed on the Fast Track 2+2<sup>®</sup> Timer.

The **Name** column allows you to customize the way you want your L1 – L8 single station and/or the M1 – M4 multi station events to appear on your Fast Track 2+2<sup>®</sup> Timer's display. For example instead of L4 event saying PICK UP you may want to change it to say something else. You are allowed up to 8 alphanumeric characters including spaces for this field. However, GREET must always be GREET but you may add 3 more alphanumeric characters after it if you desire.

The **List** column allows you to list which order you want your L1 – L8 single station and/or the M1 – M4 multi station events to appear on your Fast Track 2+2<sup>®</sup> Timer's display. The order can be arranged in any fashion but must consecutively begin with the number 1 with no duplicate number or missing numbers. An 'X' is used when the event is not to be displayed. **Caution:** if the entry is wrong for the event, the Fast Track 2+2 Timer will give an error: "L COLUMN NUMBER ERR NON-CONSECUTIVE". This error must be corrected for proper Fast Track 2+2 Timer operation.

The **Side** column allows you to choose which side the event is for in a two-lane drive-thru. Only one of two entries is allowed for each event 'A' or 'B'. **Caution:** if no entry is made for the event, the Fast Track 2+2<sup>®</sup> Timer will give an error: "L COLUMN NUMBER ERR NON-CONSECUTIVE". This error must be corrected for proper Fast Track 2+2<sup>®</sup> Timer operation.



**Event Labeling**

The **Delay** column allows you to set up a delay before the event is activated. This is useful for detection points that are frequented with traffic not necessarily with the drive -thru. The format is: 0-99 the time in seconds, or; 2: - 9: the time in minutes. Minutes and seconds cannot be combined.

The **Print** column allows you to print the event each time it is completed.

The **ALT/MAIN Config** button toggles between the MAIN CONFIGURATION and ALT CONFIGURATION Event Labeling settings.

~~ WARNING ~~

The caution box surrounding the check box for Drive -thru Config and the Event Labeling/Multi -Station Config is a warning to the user that the Fast Track 2+2<sup>®</sup> Timer's data can be distorted when the new configuration of selected box is checked is uploaded to the Fast Track 2+2<sup>®</sup> Timer during operational hours. The best time to upload this information is during the hours that the drive -thru window is closed. For more information and guidance please contact Phase Research.

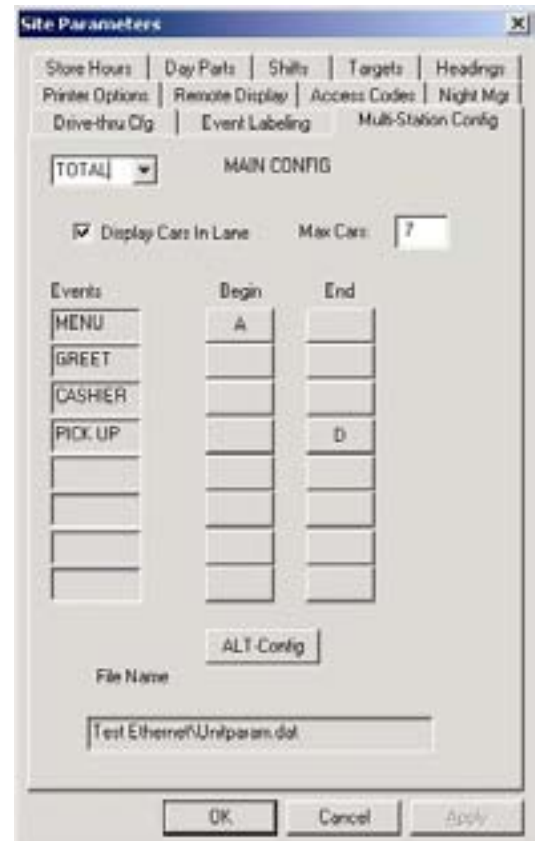
**Multi-Station Config** – The Multi-Station events which are created in Event Labeling is configured in this screen. Select from the pull-down list the multi-station event you want to configure. A list of the single station events is listed in the Events column. From the Begin column choose which single station you want to start the multi - station event by clicking on the button. The button's face changes from a blank button to a button with an 'A' for arrival or a 'D' for departure. Then stop the mul ti-station time by placing an 'A' for arrival 'D' for departure in the End column of another single station event. This will display the averages of the multi-station event you created in the activity screen of the Fast Track 2+2<sup>®</sup> Timer.

You cannot use GREET to setup a Multi-Station event.

Check the 'Display Cars in Lane' box to display the number of cars in the drive-thru lane.

The Max Cars is the number of cars that a Drive -Thru lane is capable of holding. Valid numbers are 1 -16.

The **ALT/MAIN Config** button toggles between the MAIN CONFIGURATION and ALT CONFIGURATION Multi-Station Config settings.



**Multi-Station Configuration**

### 3-10 Connect

When you select *Connect* from the Menu Bar, a standard window Connect to Site dialog box opens up allowing you to connect to a Fast Track 2+2<sup>®</sup> Timer.

To connect to a Fast Track 2+2<sup>®</sup> Timer, choose a site from the pull down menu list and click on *Connect*. Once you're connected and you click *OK* to dismiss the window. The *Connect* selection in the Menu Bar becomes inactive and the *Disconnect* selection becomes active.

The site data will be displayed after you have connected with the Fast Track 2+2<sup>®</sup> Timer. The display will show the Fast Track 2+2<sup>®</sup> Timer's serial number, version number, and if the RS Port and the Extended Software Contract (ESC) is enabled or disabled with the ESC expiration date. This also determines if the Fast Track 2+2<sup>®</sup> Timer has been set for 6 byte or 8 byte data download.



Connect to Site

### 3-11 Disconnect

When you select *Disconnect* from the Menu Bar you are disconnecting from your connect session with your *Fast Track 2+2<sup>®</sup> Timer*. The *Disconnect* from the Menu Bar becomes inactive and the *Connect* from the Menu Bar becomes active.

### **3-12 Remote Control**

The Software application lets you manage your Fast Track 2+2<sup>®</sup> Timer(s) from your PC. When you select Remote Control from the Menu Bar a new window along with the Connect to Site dialog box opens up. Select the site you want to run a Remote Control session with then click *Connect* and *OK* to dismiss the Connect to Site dialog box (*See – section [3-10 Connect](#)*). For proper operation please refer to the Fast Track 2+2<sup>®</sup> 2000 Series Drive-Thru Timer System User Guide.

Refer to the Fast Track 2+2<sup>®</sup> 2000 Series Drive-Thru Timer System User Guide for operation.

The Remote Control dialog box displays the Fast Track 2+2<sup>®</sup> Timer site (Ethernet Connect ME) that you are currently connected to.

The display to the right of the site you're connected to shows the Liquid Crystal Display (LCD) of the Fast Track 2+2<sup>®</sup> Timer in real time.

L1 through L8 are detection points. When Active (Red State) show the location of vehicle(s) in the Drive-Thru. Not all Drive-Thru stores are configured the same so, some detection points are not being used.

The keypad is used to guide you through the LCD screens to access different functions and commands for the Fast Track 2+2<sup>®</sup> Timer. Your mouse pointer is used to operate the Fast Track 2+2<sup>®</sup> Timer by moving the pointer over the desired button of the keypad and clicking.

The Print LCD allows you to print what is currently displayed on the LCD to your default local or network printer.

EXIT closes the Remote Control dialog box while maintaining your connection.

**NOTE:** Most operation performed in Remote Control can be easily done through Site Parameters

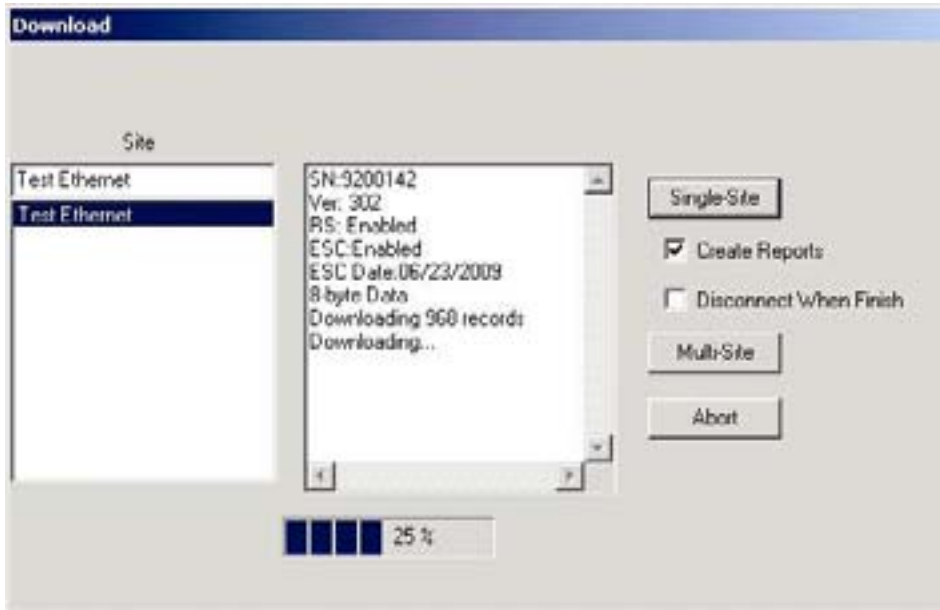


Remote Control

Refer to the Fast Track 2+2<sup>®</sup> 2000 Series Drive-Thru Timer System User Guide for operation.

### 3-13 Download

When you select *Download* from the Menu Bar, data from a Fast Track 2+2<sup>®</sup> Timer will be sent to your PC. Choose a Fast Track 2+2<sup>®</sup> Timer from your Site list and click *Single-Site* or click *Multi-Site* to begin downloading data from pre-selected sites. The window displays the site you are connecting to, how many records are being downloaded and what report is being created. A progression bar displays in percentage how much data has been downloaded. When you check *Disconnect When Finished*, Software will automatically disconnect the session to your Fast Track 2+2<sup>®</sup> Timer after data has been transferred. When you check the box for *Create Reports* the software automatically creates your reports in a preformatted format. Click on *Exit/Abort* to dismiss the window.



The Multi-Site function works with Auto Polling in, section [3-4.6 Site](#). It is used to automate the process of downloading more than one Fast Track 2+2<sup>®</sup> Timer.

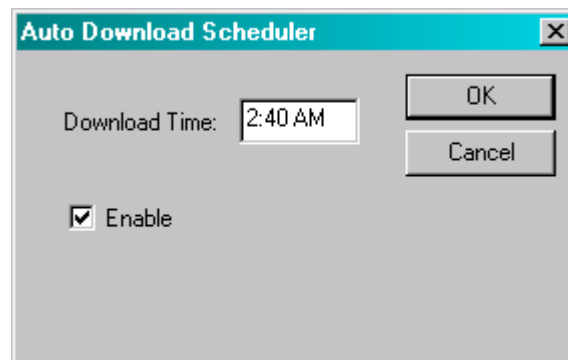
Download

### 3-14 Upload

Upload image upgrades, fixes and patches to a Fast Track 2+2<sup>®</sup> Timer.

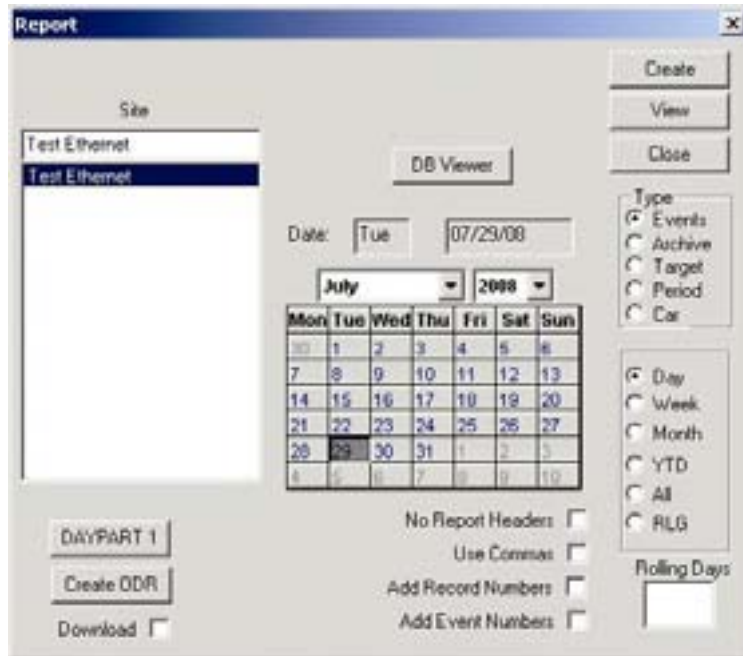
### 3-15 Scheduler

Data can be downloaded from your Fast Track 2+2<sup>®</sup> Timer to your PC automatically. Set the Download Time to the desired time and check the *Enable* box to activate. Sites must be setup for auto-polling (*See - section 3-4.6 Site*). Software must be open at the time of your Download Time, but may be minimized while open. Scheduler automatically disconnects from your sites and closes the download dialog box when it is finished and will have the last created report displayed in the Main Window.



**Auto Download**

### 3-16 Reports



Selecting *Reports* from the Menu Bar opens the Report dialog box. This allows you to manually choose and create reports from each of your sites after the data has been downloaded.

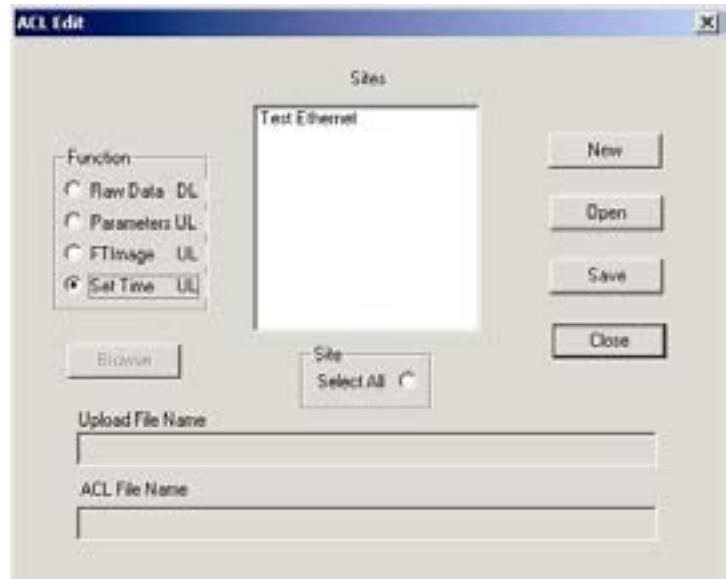
- Site** Select a Site to create a report for.
- Create** Creates the report.
- Close/View** Closes the Report dialog box and views the newly created report.

- Report**
- Type** Select the type of report to create. The timer must be set for 8-byte to produce Car reports. *See - [APPENDIX I](#), for the examples of preformatted reports.*
- Date** Displays the date that will be used to base your report on. Use the calendar below to change the date.
- No Report Headers** Check this box to create the report without the header being used in your report.
- Use Commas** Select this box to set up a delimited report to import into a database or spreadsheet program that supports ASCII files. Only available for Car and Event reports.
- Add Record Number** Enables the 'Add Record Number' to the event files.
- Add Event Number** Enables the 'Add Event Number' to the car and event files.
- Rolling Days** When RLG is selected as the event report, you can select the specified time period in this window. A new RLG file will write over an existing RLG file.
- DAYPART 1-8 & Daily** Click to select the on demand report you would to print. *See - [APPENDIX I](#)*
- Create ODR** Creates the On Demand Report (ODR) you have selected. If Download is checked the program will connect to the selected timer.
- DB Viewer** Edit your data by removing unwanted records that create problems in your report; i.e. loops that gave false indications due to resets, bad inputs, etc.

### 3-17 ACL

The Automatic Command Line (ACL) feature allows for downloading and uploading to one or more timers through the Software by creating a batch file that can be used with third party programs such as MS Windows Scheduler.

Important: *You must configure each site individually under Site Configuration using the Report Options (See - section: [3-4.6 Site](#)) to use with Raw Data DL.*



ACL

**New** Create a new ACL batch file

**Open** Opens a saved ACL batch file

**Save** Saves a new or edited ACL batch file

**Close** Closes this function

**Raw Data DL** Downloads data from timer to create reports

**Parameters UL** Uploads unit parameters to timer from a saved unit parameters file (.spd). Use browse to select the file.

**FTImage UL** Uploads a new image to timer. Update the firmware to the latest version released from Phase Research.

**Set Time UL** Sets the time on the timer from the PC's time. This will keep the timer and PC's time in sync.

**Select All** Selects all of the timers in the sites window. Clicking on a particular site will select or deselect the site.

To create an ACL batch file select a function, Raw Data DL, Parameters UL, FTImage UL, or Set Time UL select the site or 2 sites to use the function with then save the file using the name you choose.

**You should now be able to use the batch file with any third party program you wish.**

### 3-18 Enterprise

Enterprise is used to build a single file consisting of data from multiple sites that you pre-selected when you configured your site information, ([3-4.6 Site](#)). To include the site(s) you want in your build go to Site from the main menu and place a check mark for Auto Update.

#### Days;

This sets the number of days worth of data that will be included in the file. Each number represents the amount of days to be in the report. Example: 1 is all of today's data, 2 are the past two days (today and yesterday), 3 is the past three days, etc. 0 turns off the report building function. ALL uses every day that has an event in the timer.

#### Output File;

Here is where you set the path and file name, once you have click on the Output File button you will get a Save As window, go to the location where you want the file to be and then give it a name. At this point, you will see the path and file name in the address bar. This file will always have a text (txt) extension. This is an ASCII comma delimited file.



Enterprise

#### Site Name;

This displays each site as the data is being extracted from and displays "Finished" when the process is completed.

#### OK;

Closes window without saving. To save settings you must click Apply first before you click OK.

#### Cancel;

Closes window without saving.

#### Apply;

This function MUST be used to save any changes to setup.

#### Build;

Manually builds the file. This function does NOT force a download however.

- *This file can be built automatically in 2 different ways, either onboard scheduler or ACL*
- *In the site configuration, Auto Update must be checked.*

---

**SITE** , **RECORD#**, **DATE**, **DAYPART#**, **SHIFT#**, **TMSTMP**, **S**, **E#**, **EVENT** , **ETM**, **G**

**SITE**, This is the site name; the data that follow a site name belongs to that site.

**RECORD**, This is a record number; the timer uses this number to track record to download. This number can reach 131,999 in the E3 system.

**DATE**, This is the date that the event occurred on, and is always month/day/year.

**DAYPART#**, Timed events (events with elapse times) are logged with the current Daypart number

**SHIFT#**, Timed events (events with elapse times) are logged with the current shift number

**TMSTMP**, This is a time stamp, when an event has completed it is time stamped to the second.

**S**, The Fast Track can time 2 independent drive-thru simultaneously, in that case the S column would identify which drive-thru (A or B) the event had occurred in. certain events are not relative to the drive-thru lane, in that case, the column is left blank

**E#**, This is a number that identifies an input, which in-turn identifies the event name. The naming of an event can change such as "WINDOW" or "WIN2" but the number stays the same.

**EVENT**, This event name has been configured in the timer.

**ETM**, This is how long in seconds, the car spent at that event or elapsed time for that event.

**G**, This grade (A, B, C, D or F) was given to that event once it was completed.

### 3-19 Help

You may obtain help for your Software through y our local Fast Track 2+2<sup>®</sup> Timer Dealer or directly from Phase Research. If you call for help, the technician will ask you for the version of Software you're using. From the Menu Bar, click *Help* and then *About Fast Track PC Software...* to display the version of the software.



**Help**



**About**

You may also want to visit the Phase Research on the World Wide Web. You can do so by either typing in the URL: <http://www.phaseresearch.com> or by clicking on the button on the Help box. Click on *OK* to dismiss the box.





## SECTION 4 IP CONFIGURATION

### 4-1 IP Configuration

This section helps you configure other supported Ethernet devices. It is assumed that the Ethernet board for your Fast Track 2+2<sup>®</sup> Timer and The Software has been installed and that you have a working knowledge of Windows<sup>®</sup>.

#### 4-1.1 XPort Devices – Device Installer 3.6

Install the XPort LAN configuration utility found on the CD, i.e. x:\XPort LAN installer\setup.exe. You may need to install Microsoft .Net utility. The application will prompt you to install .Net if needed. The .Net can be found on your CD in x:\XPort LAN installer\dotnetfx\dotnetfx.exe.

From the Start Menu, then Programs find the Lantronix folder and run Device Installer. This will bring up a window similar to figure 1.

Click on the “Search” button in the upper left hand corner. An XPort device should now appear in your list. There should be at least one Fast Track 2+2<sup>®</sup> Timer shown with an IP address of 192.168.1.XXX. This IP address was configure at Phase Research as a test to verify the Ethernet

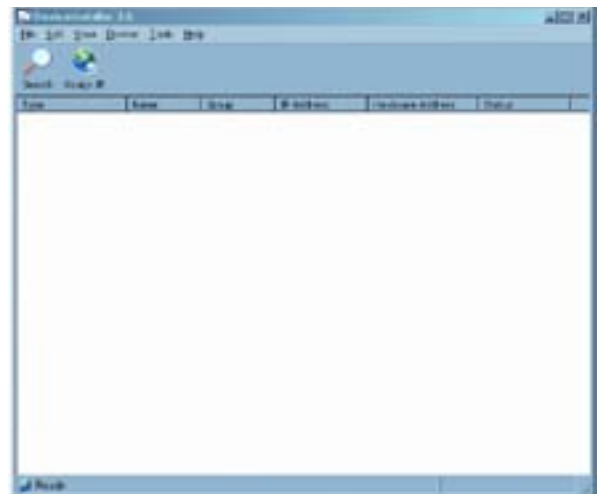


Figure 1 - Device Installer Window



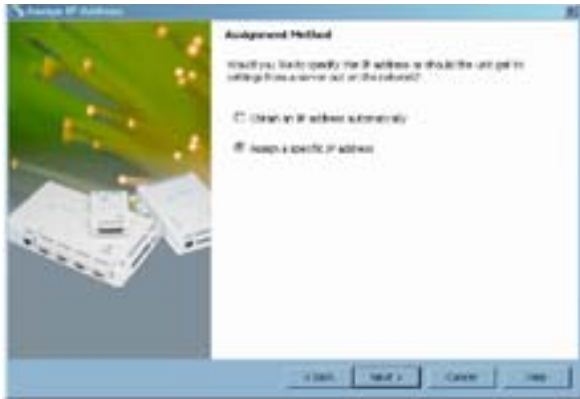
Figure 2

Boards functionality before shipping. If the XPort device *does not* appear in your list then click on the “Assign IP” button located next to the “Search” button. A new window will appear asking for the hardware address for this device. The hardware address or MAC address is located on the XPort device on top of the RJ45 connector. An example address: 00-20-4A-80-57-D8 is entered in the box provided in the window asking for the

**FAST TRACK PC SOFTWARE  
 VERSION 2.21**

hardware address. (See figure 2.) Click Next to continue.

The next step is to configure the IP Address, Subnet, and Gateway of your Fast Track 2+2<sup>®</sup> Timer. To configure the Fast Track 2+2<sup>®</sup> Timer, highlight the XPort device and click on the Assign IP button. If you have more than one XPort device in your network, make sure you know which XPort device you

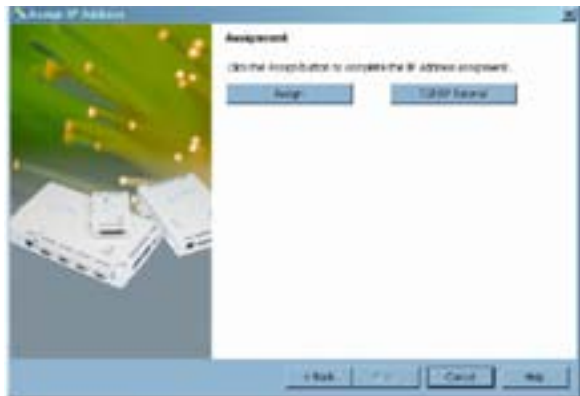


**Figure 3**



**Figure 4**

need to configure by checking the hardware address on the XPort device. If you had to enter the MAC address this is also the next step. A new window appears asking you how you would like to obtain your IP Address. Dynamic, where the network server assigns one for you, or, Static, where you enter in the information manually. Select “Assign a specific IP address”. You do not want the server to assign the IP address, because each time the Fast Track 2+2<sup>®</sup> Timer is powered off it loses the IP address it was



**Figure 5**



**Figure 6**

assigned and when the Fast Track 2+2<sup>®</sup> Timer is powered back on a new IP address is assigned. This could cause problems in the Software Suite’s configuration of Site Parameters. Click Next to continue.

Now enter the IP address, Subnet, and Gateway for your XPort device.

*If you do not know your IP address contact your network administrator.*

**FAST TRACK PC SOFTWARE  
 VERSION 2.21**

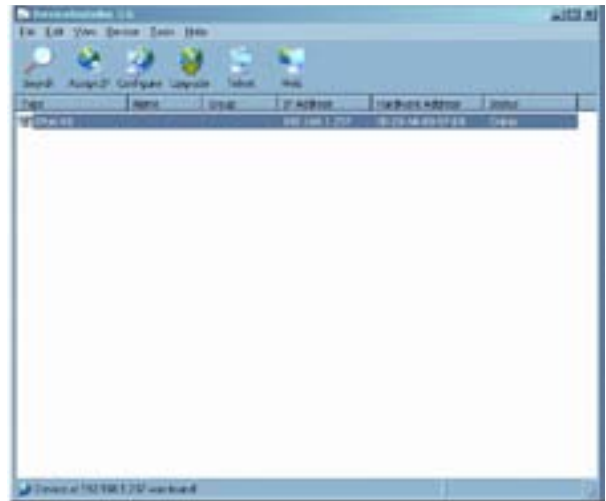
Click Next to continue and then the Assign button in the new window. When the assignment has “Completed successfully”, click on the Finish button. This will take you back to the original window; the status of the XPort device will be busy for a short period of time then will go online.

**Baud Rate and Port Configuration**

After the IP configuration has been set up the next step is to establish communication between the XPort device and the Fast Track 2+2<sup>®</sup> Timer.

Configuring the port of the XPort device. When the XPort device is highlighted four more tools or buttons will be available: Configure, Upgrade, Telnet, and Web.

For our purpose of baud rate and port configuration we need to select Configure. When Configure is clicked on a new window appears with three tabs.



**Figure 7**



**Figure 8**

Click on the Ports tab and then click on the XPort device to configure and click Edit Settings ... Change the baud rate by clicking on the Baud Rate pull down menu and selecting 38,400 as the new baud rate.



**Figure 9**



Figure 10

After the new baud rate has been selected we need to change the port assignment. Click on the “Advanced” tab and then click on Local Port. Change the value to 4660. Click OK and then OK again, this will send the new values to the XPort device. Your XPort device is now ready to use with Fast Track 2+2<sup>®</sup> Timer and the Software Suite program.

### 4-1.2 XPort Devices – Device Installer 3.1

Install the XPort LAN configuration utility found on the CD, i.e. x:\XPort LAN installer\setup.exe. You may need to install Microsoft .Net utility. The application will prompt you to install .Net if needed. The .Net can be found on your CD in x:\XPort LAN installer\dotnetfx\dotnetfx.exe.

From the Start Menu, then Programs find the XPort Installer folder and run XPort Installer.

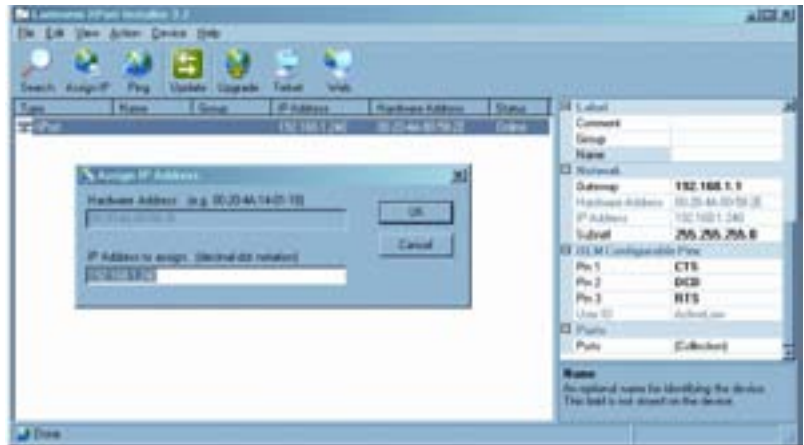


Figure 11

Click on the “Search” button in the upper left hand corner. An XPort device should now appear in your list. If the XPort device *does not* appear in your list then click on the “Assign IP” button located next to the “Search” button. A message will ask you for a unique Hardware address, which is the MAC address located on the label of the XPort Ethernet device. Enter the Hardware address and the IP address you would like to use. If the XPort device *does* appear in your list, select the device and click the “Assign IP” button. A new window should open to assign an IP address. Fill in the IP address you wish to assign the XPort device and click OK.

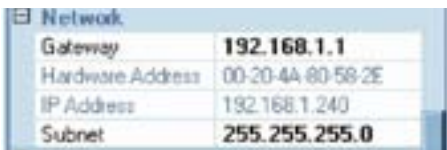


Figure 12

*If you do not know your IP address contact your network administrator.*

On the right side of the XPort Configuration, there will be another window with configuration option for the device selected. Scroll down until you see the heading Network. Change your Subnet Mask and Gateway as needed. After you’ ve made the necessary changes click on the “Update” button. The device will reboot which should take about a minute. The XPort device is now configured for use.

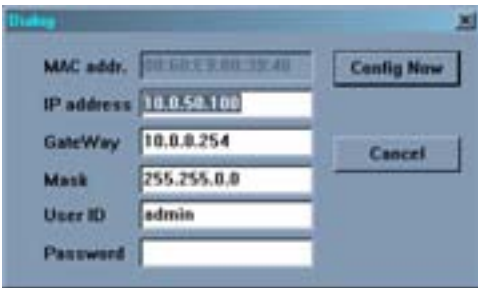
### 4-1.3 A-Top Devices



**Figure 13**

start the program, please double-click monitor.exe or from RUN type in “c: \program files\fast track software suite\monitor.exe” without the quotes. This will bring up a window similar to figure 13.

Using Windows Explorer, locate the folder that contains The Software. (Default directory: C:\Program Files\Fast Track Software Suite\). There is a configuration utility that was installed along with The Software called *monitor.exe*. This utility program allows the user to configure the Ethernet Board. To



**Figure 14**

There should be at least one Fast Track 2+2<sup>®</sup> Timer shown with an IP address of 192.168.1.XXX. This IP address was configured at Phase Research as a test to verify the Ethernet board’s functionality before shipping.

To configure the Fast Track 2+2<sup>®</sup> Timer, highlight the IP Address of the unit and click *Config*. The Dialog box, see Figure 14, comes up allowing you to configure your Fast Track 2+2 Timer.

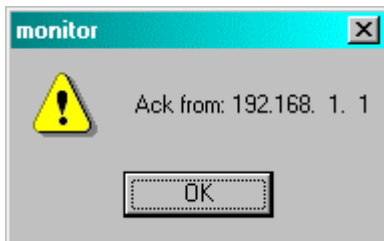
**FAST TRACK PC SOFTWARE  
VERSION 2.21**

**Note:** Port 1 in figure 15 is pre-configured and must not be changed. Changing Port 1 will cause the Ethernet Board not to communicate with the Fast Track 2+2<sup>®</sup> Timer. Figure 14 shows a version v1.6 Ethernet board. Unlike the earlier versions, shown in figure 15, of Ethernet boards the port configuration is configured through Telnet



**Figure 15**

Fill in the proper IP Address for your Fast Track 2+2<sup>®</sup> Timer, the IP Address of the TCP/IP, the gateway, and subnet mask. You may want to change the User ID and Password for the device. The default User ID is admin and the password is null. To save the changes click on the *Config Now* button or to exit with out saving click on *Cancel*.



**Figure 16**

The Fast Track 2+2<sup>®</sup> Timer that you are configuring will return an ACK message indicating the changes have been successfully modified. See Figure 16.



---

## APPENDIX I

---

### *Analyzing Data*

Fast Track 2+2<sup>®</sup> Timer helps you operate your drive thru store more efficiently and profitably by tracking the progress of customer vehicles through the ordering and delivery process. The Software helps management and staffs use this information to:

- Analyze service time.
- Improve productivity.
- Set performance goals and incentives.
- Measure performance.
- Predict staffing requirements based on historical data.
- Compare shifts, seasons, and stores.

The Software's standard preformatted reports present information in a convenient format for analysis. You may use these reports to see how your drive -thru is performing and to compare current and historical performances.

The Software report files are ASCII files that you can import into spreadsheets, database, and/or word processing programs for further presentation and analysis. Two examples of how you might use the Software report files:

- **Presentation** – Import a Software file into MS-Excel and produce an attractively formatted report to add special calculations and highlight important data. MS-Excel can also present the data in chart form.
- **Database** – Create a MS-Access data base application that adds Software file data to its database. Use the MS-Access reporting features to produce special reports that compare performances of multiple locations.

## Archive Report

The Archive Report is used to compare the event counts for current periods to those of previous periods.

Copyright © 2005 Phase Research  
Fast Track 2+2 Drive-Thru Timer  
Archive Report for Fast Track Burger                      04/22/05  
STORE: Fast Track Burger  
NUMBER: 111878  
MANAGER: John  
PHONE: (714)850-1320  
MODEM: (714)850-1502  
CITY:            Santa Ana

# CARS	MENU	GREET	PICKUP	TOTAL	PULLOUTS	FTEVENTS
Apr 22	499	499	498	498	1	1
Apr 21	460	460	460	459	0	3
Apr 20	440	440	440	440	0	3
Apr 19	456	456	456	454	2	6
Apr 18	474	474	474	474	0	2
Apr 17	433	433	433	433	0	1
Apr 16	408	408	404	404	4	1

AVG TIMES	MENU	GREET	PICKUP	TOTAL
Apr 22	0:32	0:01	0:55	2:29
Apr 21	0:28	0:03	0:59	2:43
Apr 20	0:30	0:02	1:19	2:51
Apr 19	0:36	0:04	1:32	2:55
Apr 18	0:40	0:06	1:39	3:28
Apr 17	0:39	0:06	1:38	3:47
Apr 16	0:44	0:08	1:55	3:57

## Event Report

The Event Report is used to view a complete history of events in a particular drive -thru lane.

Copyright © 2005 Phase Research  
Fast Track 2+2 Drive-Thru Timer  
Event Report for Test Ethernet  
STORE: Fast Track Burger  
NUMBER: 111878  
MANAGER: John  
PHONE: (714)850-1320  
IP: 192.168.1.56  
CITY: Santa Ana

11/08/06

0	11/08/06				01:39:16PM			Reset Memory			
1	11/08/06				01:39:16PM			Access T Reset Mem			
2	11/08/06				01:39:16PM			Access T Set Rec LengthSet RTD			
3	11/08/06				01:39:39PM			RS232 Disc			
4	11/08/06	Daypart 2	Shift 1		01:39:41PM	A	3	CASHIER	00:40	A	
5	11/08/06				01:39:41PM			RS232 Connect			
6	11/08/06	Daypart 2	Shift 1		01:39:46PM	A	2	GREET	00:02	A	
7	11/08/06	Daypart 2	Shift 1		01:39:59PM	A	1	MENU	00:15	A	
8	11/08/06	Daypart 2	Shift 1		01:40:15PM	A	2	GREET	00:02	A	
9	11/08/06	Daypart 2	Shift 1		01:40:24PM	A	4	PICK UP	00:21	A	
10	11/08/06	Daypart 2	Shift 1		01:40:24PM	A	11	TOTAL	00:40	A	
11	11/08/06				01:40:24PM	A	75	#TOTAL	2		
12	11/08/06	Daypart 2	Shift 1		01:40:35PM	A	1	MENU	00:22	A	
13	11/08/06				01:40:35PM			RS232 Disc			
14	11/08/06	Daypart 2	Shift 1		01:40:59PM	A	2	GREET	00:05	B	
15	11/08/06	Daypart 2	Shift 1		01:41:10PM	A	3	CASHIER	00:31	A	
16	11/08/06	Daypart 2	Shift 1		01:41:14PM	A	4	PICK UP	00:23	A	
17	11/08/06	Daypart 2	Shift 1		01:41:14PM	A	11	TOTAL	01:01	A	
18	11/08/06				01:41:14PM	A	75	#TOTAL	2		
19	11/08/06	Daypart 2	Shift 1		01:41:24PM	A	1	MENU	00:30	A	
20	11/08/06				01:41:33PM			RS232 Connect			
21	11/08/06	Daypart 2	Shift 1		01:42:10PM	A	4	PICK UP	00:32	A	
22	11/08/06	Daypart 2	Shift 1		01:42:10PM	A	11	TOTAL	01:16	A	
23	11/08/06				01:42:10PM	A	75	#TOTAL	1		
24	11/08/06	Daypart 2	Shift 1		01:42:35PM	A	3	CASHIER	00:40	A	
25	11/08/06				01:43:24PM			RS232 Disc TM			
26	11/08/06	Daypart 2	Shift 1		01:43:26PM	A	3	CASHIER	00:45	B	
27	11/08/06	Daypart 2	Shift 1		01:43:31PM	A	2	GREET	00:02	A	
28	11/08/06	Daypart 2	Shift 1		01:43:44PM	A	1	MENU	00:15	A	
29	11/08/06	Daypart 2	Shift 1		01:44:00PM	A	2	GREET	00:02	A	
30	11/08/06	Daypart 2	Shift 1		01:44:09PM	A	4	PICK UP	00:21	A	
31	11/08/06	Daypart 2	Shift 1		01:44:09PM	A	11	TOTAL	00:40	A	
32	11/08/06				01:44:09PM	A	75	#TOTAL	2		

## Period Report

The Period Report is used to compare car counts and average event times for different periods.

Copyright © 2005 Phase Research  
Fast Track 2+2 Drive-Thru Timer  
Archive Report for Fast Track Burger                      04/22/05  
STORE: Fast Track Burger  
NUMBER: 111878  
MANAGER: John  
PHONE: (714)850-1320  
MODEM: (714)850-1502  
CITY:            Santa Ana

Daypart 1	Total Cars	AVG Time
MENU	158	0:22
GREET	159	0:01
PICKUP	156	0:36
TOTAL	156	2:06

Daypart 2	Total Cars	AVG Time
MENU	173	0:26
GREET	174	0:01
PICKUP	175	0:38
TOTAL	175	2:13

Daypart 3	Total Cars	AVG Time
MENU	168	0:51
GREET	168	0:01
PICKUP	168	1:09
TOTAL	168	2:25

Shift 1	Total Cars	AVG Time
MENU	258	0:29
GREET	259	0:01
PICKUP	258	0:52
TOTAL	258	2:11

Shift 2	Total Cars	AVG Time
MENU	241	0:45
GREET	240	0:01
PICKUP	240	0:59
TOTAL	240	2:53

Daily	Total Cars	AVG Time
MENU	499	0:32
GREET	499	0:01
PICKUP	498	0:55
TOTAL	498	2:29

## Target Report

The Target Report is used to compare the percentage of events meeting your performance goals during different periods of time. This report includes one column for each performance grade.

This report includes a set of data for each drive-thru station. The rows within the group show performance for different periods so that you may compare performance for the periods.

Copyright © 2005 Phase Research  
Fast Track 2+2 Drive-Thru Timer  
Archive Report for Fast Track Burger                      04/22/05  
STORE: Fast Track Burger  
NUMBER: 111878  
MANAGER: John  
PHONE: (714)850-1320  
MODEM: (714)850-1502  
CITY: Santa Ana

MENU	Tot	A%	Tot	B%	Tot	C%	Tot	D%	Tot	F%
Apr 22		48		22		10		16		4
Apr 21		43		28		11		10		8
Apr 20		44		21		18		7		10
Apr 19		39		19		12		18		22
Apr 18		35		19		10		16		20
Apr 17		33		16		9		19		23
Apr 16		29		10		11		28		22

GREET	Tot	A%	Tot	B%	Tot	C%	Tot	D%	Tot	F%
Apr 22		88		12		0		0		0
Apr 21		79		18		3		0		0
Apr 20		71		21		8		0		0
Apr 19		69		19		12		0		0
Apr 18		35		24		20		16		5
Apr 17		33		36		19		9		3
Apr 16		29		30		21		8		12

PICKUP	Tot	A%	Tot	B%	Tot	C%	Tot	D%	Tot	F%
Apr 22		41		22		17		16		4
Apr 21		43		23		16		10		8
Apr 20		32		26		20		12		10
Apr 19		30		19		11		28		12
Apr 18		22		22		30		16		20
Apr 17		20		16		19		22		23
Apr 16		22		11		15		28		24

TOTAL	Tot	A%	Tot	B%	Tot	C%	Tot	D%	Tot	F%
Apr 22		47		29		17		1		4
Apr 21		43		26		10		13		8
Apr 20		32		18		20		20		10
Apr 19		23		15		21		23		18
Apr 18		12		22		30		16		20
Apr 17		9		16		20		32		23
Apr 16		0		11		25		28		36

## Car Report

The Car Report is used to time stamp in seconds the arrival and departure time of each car as it goes through the drive thru-lane. The restrictions of the timer is that it must be configured as a one window or two window store with no pre-loops, no more than one multi-station event or no more than one menu board and is set for 8-byte mode.

Copyright © 2005 Phase Research  
Fast Track 2+2 Drive-Thru Timer  
Car Report for Test Ethernet 11/08/06  
STORE: Fast Track Burger  
NUMBER: 111878  
MANAGER: John  
PHONE: (714)850-1320  
IP: 192.168.1.56  
CITY: Santa Ana

STATION NUMBER		CAR	SIDE	2 GREET	1 MENU	3 CASHIER	4 PICK UP	11 TOTAL
ARRIVAL	DEPARTURE							
06:00:08AM	06:00:53AM	1	A			32	45	
06:00:25AM	06:01:05AM	2	A				40	
06:01:59AM	06:02:36AM	3	A	2	8	8	12	37
06:02:14AM	06:02:56AM	4	A	5	10	10	10	42
06:02:39AM	06:03:35AM	5	A	7	17	13	15	56
06:03:16AM	06:04:15AM	6	A	2	11	21	12	59
06:03:46AM	06:04:43AM	7	A	3	26	7	19	57
06:04:21AM	06:05:12AM	8	A	1	12	12	20	51
06:04:37AM	06:05:29AM	9	A	3	9	8	14	52
06:04:53AM	06:05:41AM	10	A	2	7	10	10	48
06:05:44AM	06:07:10AM	11	A	2	15	21	31	86
06:06:13AM	06:08:35AM	12	A	2	22	23	40	142
06:06:54AM	06:09:26AM	13	A	5	30	32	45	152
06:09:29AM	06:10:06AM	14	A	2	8	8	12	37
06:09:44AM	06:10:26AM	15	A	5	10	10	10	42
06:10:09AM	06:11:05AM	16	A	7	17	13	15	56
06:10:46AM	06:11:45AM	17	A	2	11	21	12	59
06:11:16AM	06:12:13AM	18	A	3	26	7	19	57
06:11:51AM	06:12:42AM	19	A	1	12	12	20	51
06:12:07AM	06:12:59AM	20	A	3	9	8	14	52
06:12:23AM	06:13:11AM	21	A	2	7	10	10	48
06:13:14AM	06:14:40AM	22	A	2	15	21	31	86
06:13:43AM	06:16:05AM	23	A	2	22	23	40	142
06:14:24AM	06:16:56AM	24	A	5	30	32	45	152
06:16:59AM	06:17:36AM	25	A	2	8	8	12	37
06:17:14AM	06:17:56AM	26	A	5	10	10	10	42
06:17:39AM	06:18:35AM	27	A	7	17	13	15	56

## On Demand Reports

The On Demand Reports or ODR creates Dayparts or Daily reports just like the ones created from the Fast Track printer. This allows the user a quick way to view their data with a minimal amount of mouse clicks.

On Demand Reporting can be used in three different ways:

- ODR can be used through the Fast Track Software Suite from the Reports function.
- ODR can run on the fly by just running the batch programs.
- ODR batch programs can be scheduled to run from a 3<sup>rd</sup> party scheduler. This will allow for reports to be automatically viewed on the screen without any user intervention.

The install process installs the twelve batch files into your Fast Track Software Suite folder.

ODR_DAYPART1.BAT	ODR_DAYPART7.BAT
ODR_DAYPART2.BAT	ODR_DAYPART8.BAT
ODR_DAYPART3.BAT	ODR_DAILY.BAT
ODR_DAYPART4.BAT	REPORTS.BAT
ODR_DAYPART5.BAT	REMOTE.BAT
ODR_DAYPART6.BAT	REMOTE CONTROL.BAT

These batch programs may be ran from the Fast Track Software Suite folder or shortcuts can be created and placed on your desktop.

To use an ODR for Daypart 1 for an example, click on the ODR\_DAYPART1.BAT program. The program will start to run, connect to the first site you created within the Site function. It will then proceed to download the data and then create a report, then sending it to print preview for viewing (see sample). You may now print the report to your local printer or discard it after viewing. The printer prints a report similar to report created on the timer's printer.

If there is more than one site listed under the Site function, the site that was created first will be the only site reports can be retrieved from using any of the ODR Daypart batch or ODR Daily batch files. Reports.bat can create reports from any unit listed in your sites. The Reports.b at function is the same as the Reports function within the software.

Remote and Remote Control batch programs can connect with any timer that is listed in your Sites. Remote Control can give you full timer control using the virtual keypad while Remote only lets you view without any interaction.

```
04:14PM 06/08/08
Fast Track Burgers
Start Daily Stop
03:00PM <> 11:00PM
06/08/08
A Side #Cars Avg
MENU 772 19
GREET 771 5
WINDOW 773 18
TOTAL 773 46
```

```
Avg Cars/Lane = 1.7
Pull Outs = 0
```

```
Event: MENU
Target #Cars %
A <= 20 514 67
D <= 35 258 33
```

```
Event: GREET
Target #Cars %
A <= 2 386 50
B <= 5 128 17
C <= 10 128 17
D <= 15 129 17
```

```
Event: WINDOW
Target #Cars %
A <= 20 515 67
B <= 25 129 17
C <= 35 129 17
```

```
Event: TOTAL
Target #Cars %
A <= 80 773 100
```

Daily Report Sample

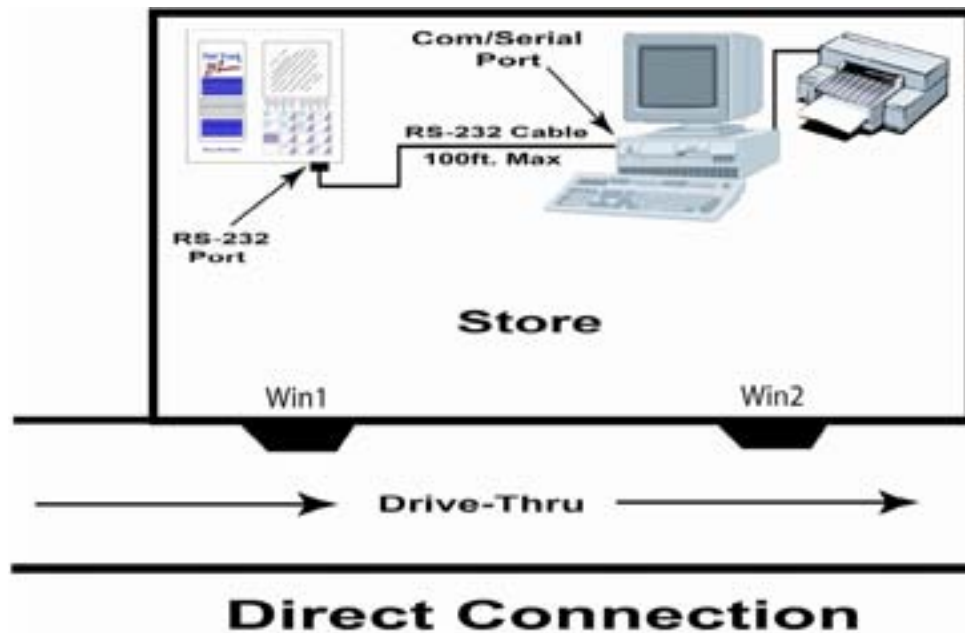


## APPENDIX II

### *Typical Applications*

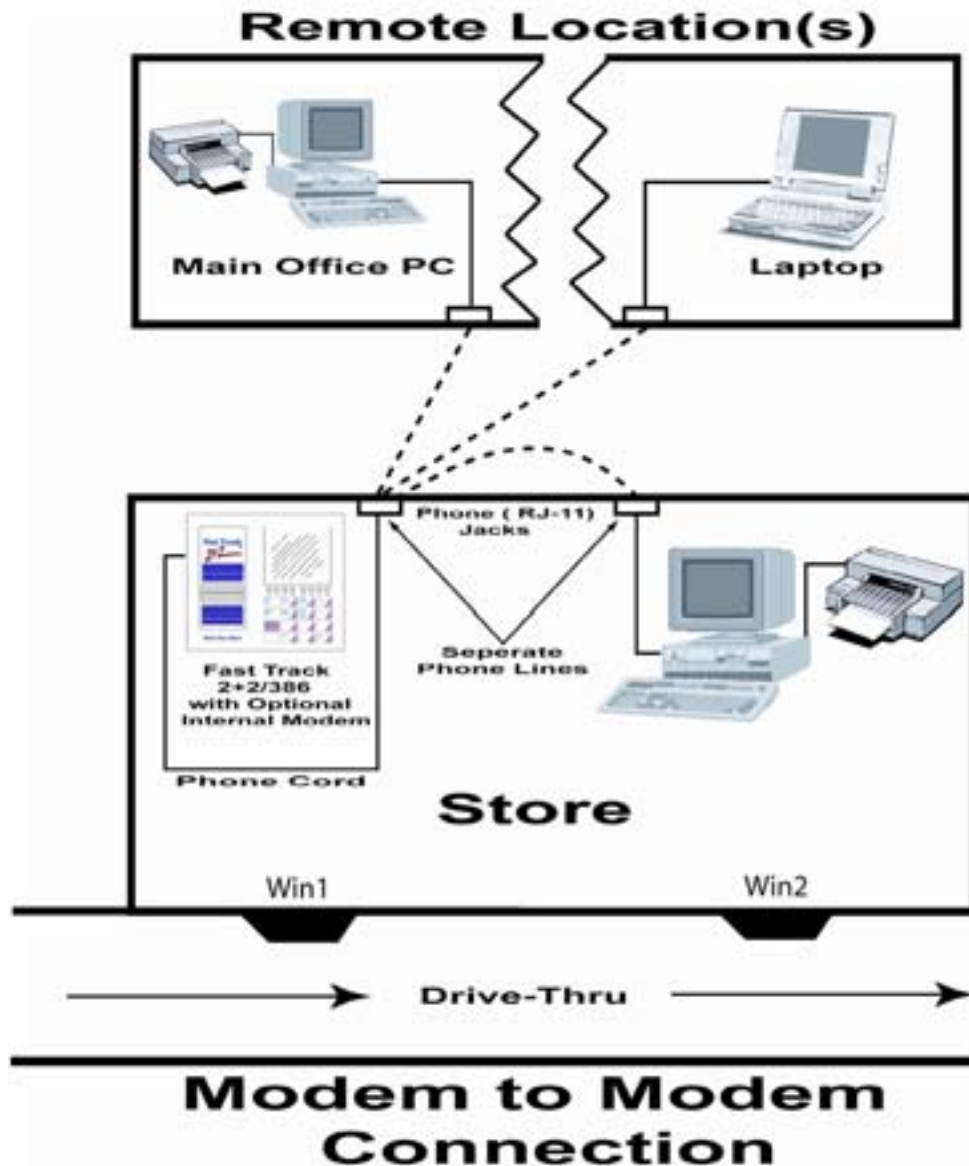
#### **Direct Connect**

A typical direct connect application is having your Software PC located within the same location as your Fast Track 2+2<sup>®</sup> Timer. A link is established by connecting an RS-232 cable between the Software PC and the Fast Track 2+2<sup>®</sup> Timer. Note: The RS-232 cable may not exceed 100 feet.



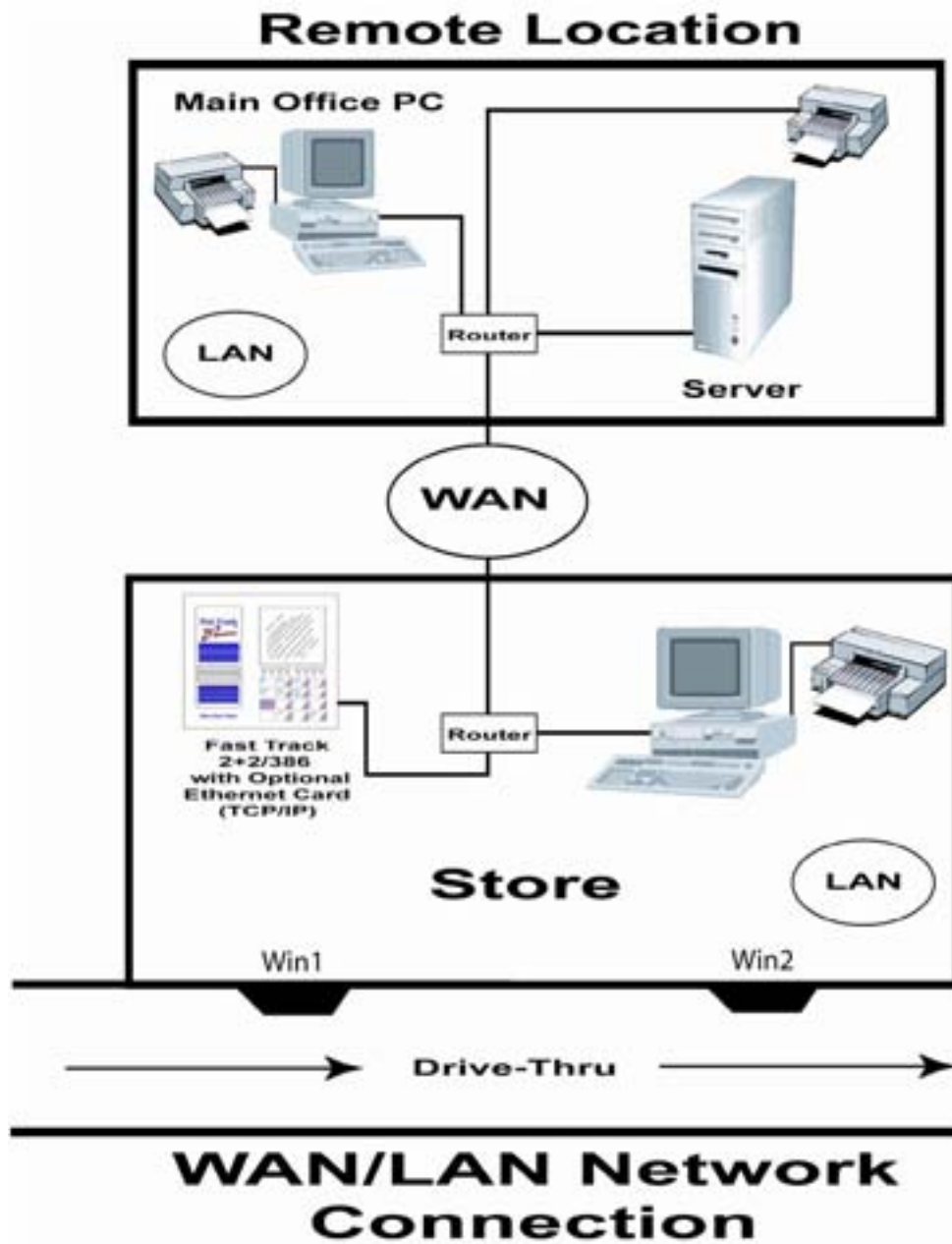
### Modem to Modem Connect

A typical remote connect application is having your Software PC located either off -site and/or at the same location of your Fast Track 2+2<sup>®</sup> Timer. A link is established by connecting a PC's modem to the Fast Track 2+2<sup>®</sup> Timer's modem.



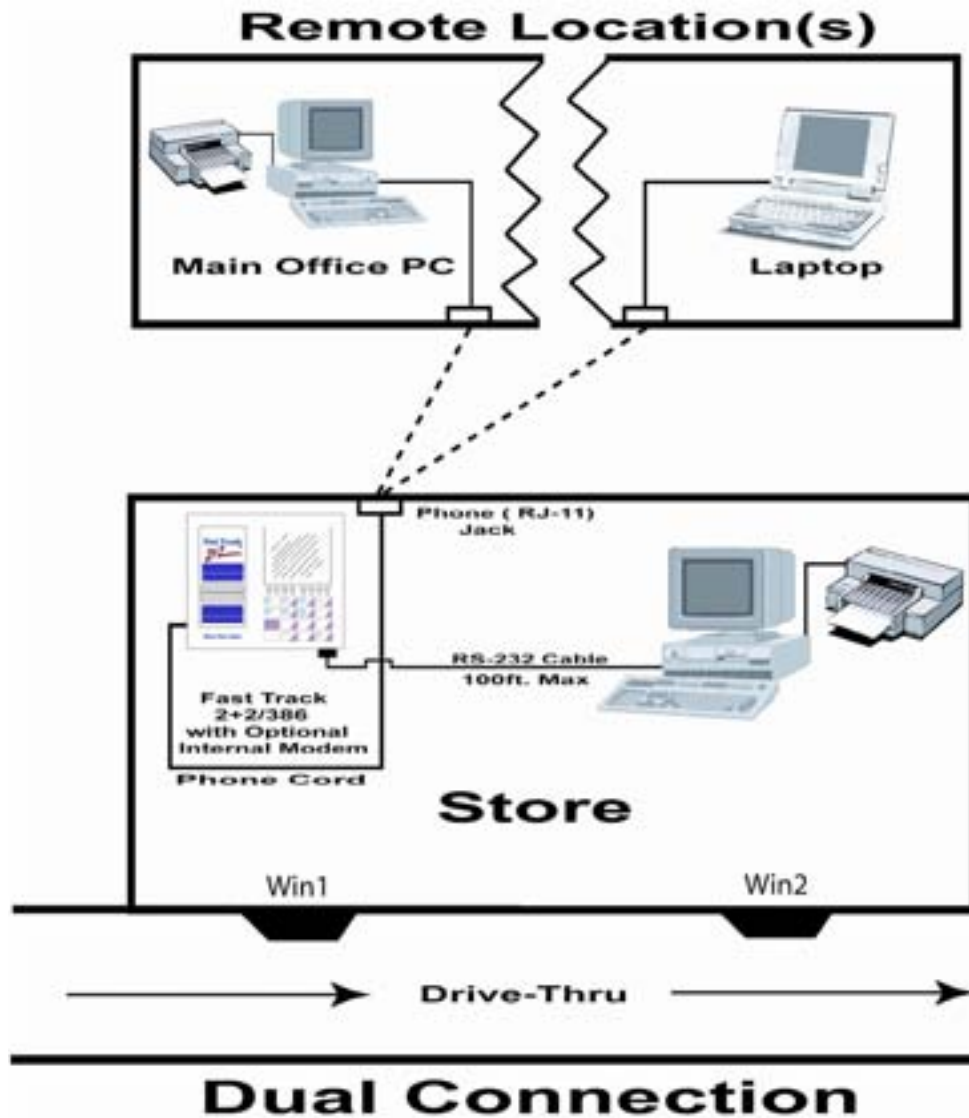
## Network Connect

A link is established either by connecting through a WAN/LAN network



## Dual Connect

A typical dual connection is using two computers with two separate types of connections. A communication session is only available to one computer at a time. No two computers may communicate to a Fast Track 2+2<sup>®</sup> Timer at the same time.



## APPENDIX III

### Printer Report Tapes

The sample printer report tape below details the meaning of each entry on a report generated by the automatic reporting feature of the Fast Track 2+2<sup>®</sup> Timer. The following pages feature examples of the 16 different reporting options available from the Fast Track 2+2<sup>®</sup> Timer's printer tape.

The printer options feature contains an option to turn the targets ON or OFF. If the targets are turned off the information below the entry "PULL OUTS" will not appear on the reports. Only the target times that have actual times are displayed. If a target time is not displayed then no data is available for that grade.

**Note:** When a report is being processed by the Fast Track 2+2<sup>®</sup> Timer, the Time and Date in the display of the Fast Track 2+2<sup>®</sup> Timer will begin to flash and the only key function allowed is the clear key which will stop the report being generated.

	STORE: _____	
	NUMBER: _____	
	MANAGER: _____	
	PHONE: (____) _____	} Store Heading
	MOBILE: (____) _____	
	CITY: _____	
	_____	
Report Header	*****DAILY SHIFTS*****	
	00:17 TUE APR 6 2005	Date and Time Report Created
	START- SHIFT1 -STOP	Type of Report Generated
Occuring Time for Parameter	06:00 <-> 16:30	
	FROM- DAILY -TO	
Report Beginning Date	APR/05/05<->APR/05/05	Report Ending Date
Drive-Thru Lane	A SIDE #CARS AVG	Detection Point Car Total
	MENU 258 0:29	
Detection Points	GREET 259 0:01	} Detection Point Time Averages
	PICK UP 258 0:52	
	TOTAL 258 2:53	
	AVG CARS/LANE = 1.7	Average Car per Lane
Total Pull Outs During this Period	PULL OUTS = 1	Total Cars at Each Grade
Targeted Event	EVENT: MENU	
	TARGET #CARS %	} Percentage of Total Cars at Each Grade
	A <= 0:40 183 71	
	F > 0:60 75 29	
	EVENT: GREET	
Target Grade Time Averages	TARGET #CARS %	
	A <= 0:04 228 88	
	B <= 0:07 31 12	
	EVENT: PICK UP	
	TARGET #CARS %	
	A <= 0:40 106 41	
	B <= 0:50 57 22	
	C <= 1:00 44 17	
	D <= 1:10 41 16	
	F > 1:10 10 4	
	EVENT: TOTAL	
	TARGET #CARS %	
	A <= 2:30 121 47	
	B <= 3:00 75 29	
	C <= 3:30 44 17	
	D <= 4:00 8 3	
	F > 4:00 10 4	
	*****END OF REPORT*****	Report Footer

Printer Tape

**FAST TRACK PC SOFTWARE  
 VERSION 2.21**

```

15:00  MON APR 5 2004
START- HOURLY -STOP
14:00  <> 15:00

A SIDE  #CARS  AVG
MENU    19  0:58
GREET   19  0:04
PICK UP  19  1:11
TOTAL   19  2:40

AVG CARS/LANE = 1.7
PULL OUTS    = 0
  
```

**Hourly**

```

2:00PM WED APR 7 2004
START- DAYPART1-STOP
10:30AM <> 2:00PM

A SIDE  #CARS  AVG
MENU    122  0:52
GREET   122  0:04
PICK UP  122  1:19
TOTAL   122  2:48

AVG CARS/LANE = 1.7
PULL OUTS    = 0
  
```

**Day Part**

```

00:01  WED APR 7 2004
START- SHIFT2 -STOP
16:30  <> 00:00

A SIDE  #CARS  AVG
MENU    198  0:58
GREET   198  0:04
PICK UP  198  1:11
TOTAL   198  2:40

AVG CARS/LANE = 1.7
PULL OUTS    = 0
  
```

**Shift**

```

11:00PM SAT APR 3 2004
START- DAILY -STOP
10:30AM <> 11:00PM

A SIDE  #CARS  AVG
MENU    241  0:52
GREET   240  0:04
PICK UP  240  1:19
TOTAL   240  2:48

AVG CARS/LANE = 1.7
PULL OUTS    = 1
  
```

**Daily**

**Real-Time (RT)** reports - These report do not display the header or footer. The time and date of the report are the same as the end of the reporting period.

```

*****DAILY HOURLY*****
11:00PM FRI APR 2 2004

START- HOURLY -STOP
10:00AM <> 11:00AM
FROM- DAILY -TO
APR/02/04<>APR/02/04

A SIDE  #CARS  AVG
MENU    19  0:58
GREET   19  0:04
PICK UP  19  1:11
TOTAL   19  2:40

AVG CARS/LANE = 1.7
PULL OUTS    = 0

*****END OF REPORT*****
  
```

**Hourly**

```

*****DAILY DAYPARTS*****
11:04PM FRI APR 2 2004

START- DAYPART1-STOP
10:30AM <> 2:00PM
FROM- DAILY -TO
APR/02/04<>APR/02/04

A SIDE  #CARS  AVG
MENU    122  0:52
GREET   122  0:04
PICK UP  122  1:19
TOTAL   122  2:48

AVG CARS/LANE = 1.7
PULL OUTS    = 0

*****END OF REPORT*****
  
```

**Day Part**

```

*****DAILY SHIFTS*****
11:05PM FRI APR 2 2004

START- SHIFT1 -STOP
10:30AM <> 11:00PM
FROM- DAILY -TO
APR/02/04<>APR/02/04

A SIDE  #CARS  AVG
MENU    198  0:58
GREET   198  0:04
PICK UP  198  1:11
TOTAL   198  2:40

AVG CARS/LANE = 1.7
PULL OUTS    = 0

*****END OF REPORT*****
  
```

**Shift**

```

*****DAILY DAILY*****
11:05PM FRI APR 2 2004

START- SHIFT1 -STOP
10:30AM <> 11:00PM
FROM- DAILY -TO
APR/02/04<>APR/02/04

A SIDE  #CARS  AVG
MENU    241  0:52
GREET   240  0:04
PICK UP  240  1:19
TOTAL   240  2:48

AVG CARS/LANE = 1.7
PULL OUTS    = 1

*****END OF REPORT*****
  
```

**Daily**

**Daily** reports are just like the Real-Time reports except that it is generated at a specified time in the REPORT @ feature.

**FAST TRACK PC SOFTWARE  
 VERSION 2.21**

```

*****WEEKLY HOURLY*****
00:00  SUN APR 11 2004

START- HOURLY -STOP
06:00  <-> 07:00
FROM-  WEEKLY -TO
APR/04/04<->APR/10/04

A SIDE  #CARS  AVG
MENU    133  0:47
GREET   133  0:04
PICK UP 133  1:26
TOTAL   133  3:01

AVG CARS/LANE = 1.7
PULL OUTS    = 0

*****END OF REPORT*****
  
```

**Hourly**

```

*****WEEKLY DAYPARTS*****
10:13PM SUN APR 4 2004

START- DAYPART2-STOP
2:00PM <-> 5:00PM
FROM-  WEEKLY -TO
MAR/29/04<->APR/04/04

A SIDE  #CARS  AVG
MENU    813  0:47
GREET   813  0:04
PICK UP 813  1:26
TOTAL   813  3:01

AVG CARS/LANE = 1.7
PULL OUTS    = 0

*****END OF REPORT*****
  
```

**Day Part**

```

*****WEEKLY SHIFTS*****
10:16PM SUN APR 4 2004

START- SHIFT1 -STOP
10:30AM <-> 10:00PM
FROM-  WEEKLY -TO
MAR/29/04<->APR/04/04

A SIDE  #CARS  AVG
MENU   1352  0:47
GREET  1352  0:04
PICK UP 1352  1:26
TOTAL  1352  3:01

AVG CARS/LANE = 1.7
PULL OUTS    = 0

*****END OF REPORT*****
  
```

**Shift**

```

*****WEEKLY DAILY*****
10:16PM SUN APR 4 2004
FROM-  WEEKLY -TO
MAR/29/04<->APR/04/04

A SIDE  #CARS  AVG
MENU    1687  0:47
GREET   1687  0:04
PICK UP 1685  1:26
TOTAL   1685  3:01

AVG CARS/LANE = 1.7
PULL OUTS    = 2

*****END OF REPORT*****
  
```

**Daily**

**Weekly** reports will take all the days of the week, create a single report, and then generate it on the first day of the succeeding week at the time specified in the REPORT @ feature.

```

*****MONTHLY HOURLY*****
00:24  SAT MAY 1 2004

START- HOURLY -STOP
06:00  <-> 07:00
FROM-  MONTHLY -TO
APR/01/04<->APR/30/04

A SIDE  #CARS  AVG
MENU    532  0:42
GREET   532  0:03
PICK UP 532  1:02
TOTAL   532  2:53

AVG CARS/LANE = 1.7
PULL OUTS    = 0

*****END OF REPORT*****
  
```

**Hourly**

```

*****MONTHLY DAYPARTS*****
08:05  SAT MAY 1 2004

START- DAYPART1-STOP
06:00  <-> 11:00
FROM-  MONTHLY -TO
APR/01/04<->APR/30/04

A SIDE  #CARS  AVG
MENU   3455  0:42
GREET  3455  0:03
PICK UP 3455  1:02
TOTAL  3455  2:53

AVG CARS/LANE = 1.7
PULL OUTS    = 0

*****END OF REPORT*****
  
```

**Day Part**

```

*****MONTHLY SHIFTS*****
10:37  SAT MAY 1 2004

START- SHIFT1 -STOP
06:00  <-> 16:30
FROM-  MONTHLY -TO
APR/01/04<->APR/30/04

A SIDE  #CARS  AVG
MENU   5561  0:42
GREET  5561  0:03
PICK UP 5561  1:02
TOTAL  5561  2:53

AVG CARS/LANE = 1.7
PULL OUTS    = 0

*****END OF REPORT*****
  
```

**Shift**

```

*****MONTHLY DAILY*****
11:04  SAT MAY 1 2004
FROM-  MONTHLY -TO
APR/01/04<->APR/30/04

A SIDE  #CARS  AVG
MENU   6948  0:42
GREET  6948  0:04
PICK UP 6944  1:02
TOTAL   6944  2:53

AVG CARS/LANE = 1.7
PULL OUTS    = 9

*****END OF REPORT*****
  
```

**Daily**

**Monthly** reports will take the days within the month, create a single report, and then generate it on the first day of the succeeding month at the time specified in the REPORT @ feature.

---

NOTES

---

**NOTES**

---

**Fast Track**

**2+2**®

**Drive-Thru Timer**

---

**PHASE RESEARCH**

3500 W. Moore Avenue, Suite M  
Santa Ana, California 92704-6818  
P: 714-850-1320 F: 714-850-1502

[fasttrack@phaseresearch.com](mailto:fasttrack@phaseresearch.com)

[www.fasttracktimer.com](http://www.fasttracktimer.com)